

Climate change and fluctuations of pelagic fish populations in the Far East region

Yeong Gong and Young Sang Suh*

National Fisheries Research and Development Institute (NFRDI), Busan 619-750, Korea

Abstract

Time series of ocean climate indices and catch records were used to identify the alternation patterns of pelagic fish populations in relation to climate regime shifts. During 1910-2008, an orderly alternation of dominant pelagic fish groups was observed in the Tsushima Warm Current (TWC; Yellow Sea-East China Sea-East Sea/Japan Sea) and Kuroshio-Oyashio Current (KOC; Northwestern Pacific) regions. After the collapse of herring fishery in the late 1920s, the sardine (A group) dominated in the 1930s, 3 other species (C group; Pacific saury, jack mackerel, and anchovy) dominated in the 1950s-1960s, chub mackerel (B group) dominated in the 1970s, and then sardine (A group) dominated again during cool regime in the 1980s. As sardine biomass decreased in association with the climate regime shift that occurred in the late 1980s, catches of C group immediately increased after the regime shift and remained at high levels during warm regime in the 1990s. Alternations of dominant fish groups occurred 6 times between 1910 and 2008. The dominant period of the 7 species lasted for 10-20 years. The catch of Pacific sardine in the TWC and KOC regions showed a negative correlation with the catch of the other 5 species (Pacific herring, anchovy, jack mackerel, Pacific saury, and common squid), suggesting that the abundance of the 5 species is strongly affected by the abundance of Pacific sardine in relation to the climate regime shifts. The total catch level of the 7 species in the KOC region was generally higher than that in the TWC region before 1991 but was lower after 1992, suggesting that the fish populations in the Pacific side are shifted to the TWC region by zonal oscillation of the oceanic conditions in relation to the climate regime shift in the late 1980s.

Key words: abundance, alternation, climate indices, pelagic fish

INTRODUCTION

Growing evidence suggests that abrupt environmental regime changes can influence pelagic fish production (Lluch-Belda et al. 1989, Beamish 1995, Hare and Mantua 2000, Yatsu et al. 2005, Tian et al. 2008). Sardine landings show synchronous variations in the northwestern, northeastern, and southeastern Pacific (Kawasaki 1983). The discovery of these biological regime shifts preceded the description of the underlying physical variability. Fluctuations in air temperature, ocean temperature, atmospheric circulation, and carbon dioxide were remarkably similar

in phase and duration to the biological records (Chavez et al. 2003). As a result, it has been suggested that a regime or climatic shift may be best determined by monitoring marine organisms rather than climate (Hare and Mantua 2000). It is also suggested that the ocean conditions were warmer than normal at the upper layers in the Tsushima Warm Current (TWC) region in the 1990s (Gong et al. 2008, 2010, Tian et al. 2008). Pacific sardine, file fish, and walleye pollock disappeared from the TWC region after the climate regime shift in the late 1980s.

Open Access <http://dx.doi.org/10.5141/JEFB.2012.003>

This is an Open Access article distributed under the terms of the Creative Commons Attribution Non-Commercial License (<http://creativecommons.org/licenses/by-nc/3.0/>) which permits unrestricted non-commercial use, distribution, and reproduction in any medium, provided the original work is properly cited.
pISSN: 1975-020X eISSN: 2093-4521

Received 30 October 2011, Accepted 23 November 2011

*Corresponding Author

E-mail: yssuh@nfrdi.go.kr

Tel: +82-51-720-2210

The abrupt changes in the fish community in the East Sea (Japan Sea) that occurred in the mid-1970s and late 1980s seemed to closely correspond with the climate regime shifts in the North Pacific (Tian et al. 2006). A fishery regime is defined as a decadal-scale period of high or low abundance of fish populations. Both the marine ecosystem as the fish population habitat and the production system as the bottom level of the food web shifted in the mid-1970s and the late 1980s in the North Pacific and its adjacent regions.

Fluctuation of fish population abundance may result from environmental fluctuation, density-dependent reproduction rate, or interspecific interactions. The alternation of dominant pelagic fish species in the waters off of Japan are well documented (Nakahara and Ogawa 1979, Matsuda et al. 1991, 1992, Kawasaki 1992, Watabe 1992a, 1992b, Schwartzlose et al. 1999, Yatsu et al. 2005). It was noticed that the year-to-year catch of some pelagic fish populations (e.g., chub mackerel) in the Kuroshio-Oyashio Current (KOC) region showed a different pattern than the catch in the TWC region after the climate regime shift in the late 1980s (Gong et al. 2008, 2010). The replacement patterns in relation to climate change in the waters around the Korean peninsula (TWC region) have not been fully explained compared with the patterns in the KOC region due to the limited specific regional catch data.

This study investigates the temporal correspondence between the main patterns of abundance fluctuation among Far East exploited pelagic fish populations and large scale climate and temperature indices.

MATERIALS AND METHODS

The Arctic Oscillation Index (AOI), Aleutian Low Pressure Index (ALPI), and Monsoon Index (MOI) were chosen as climatic indices for the Far East region (Fig. 1). A time series of winter (Jan, Feb, Mar; JFM) sea surface temperature (SST) anomalies in the TWC and KOC regions for the period of 1900-2010 (Fig. 2) (Japan Meteorological Agency 2011) and anomalies of integrated mean temperature (0-150 m) and zooplankton biomass along the PM line (36° N, 136° E-44° N, 132° E) in the TWC region for the period 1973-1998 (Fig. 3) (Minami et al. 1999) were used to examine the fluctuations in the oceanic conditions in relation to the climate changes.

Year-to-year catch series of the 7 pelagic fishes (Pacific herring, Japanese sardine, anchovy, chub mackerel, jack mackerel, Pacific saury, and common squid) were constructed for the TWC (East China Sea and Yellow Sea and

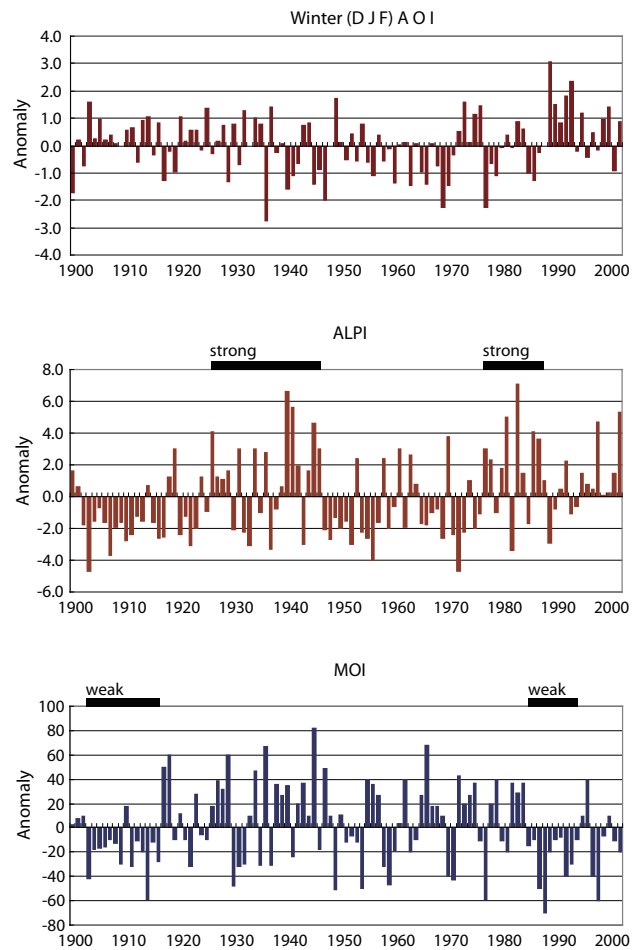


Fig. 1. The Arctic Oscillation Index (AOI), Aleutian Low Pressure Index (ALPI), and Monsoon Index (MOI), 1900-2002. The strong ALPI in the 1930s and 1980s and weaker winter MOI in the 1900s and 1990s are marked by black bars (Gong et al. 2008).

East Sea/Japan Sea) and KOC (Northwest Pacific including the Okhotsk Sea and Seto Inland) regions. Since the range of the pelagic fish populations is quite large, fishing records from all fishing countries in the Far East (FAO area 61; north of 20° N, west of 175° W) were included to examine the long-term trend in abundance of the fish populations across the entire distribution range.

The historical catch data for the period 1910-2008 are based on the Yearbook of Fishery Statistics of Korea and Japan, FAO Yearbook of Fisheries Statistics, and previous reports including fishery data (Chikuni 1985, Schwartzlose et al. 1999, Klyashtorin 2001, Gong et al. 2007).

Although catch alone is acknowledged to be a crude measure of abundance, direct surveys have only recently started in most systems, so there are no comparative indices for periods of high and low abundance of the pelagic fish populations. Nevertheless, the changes in catches

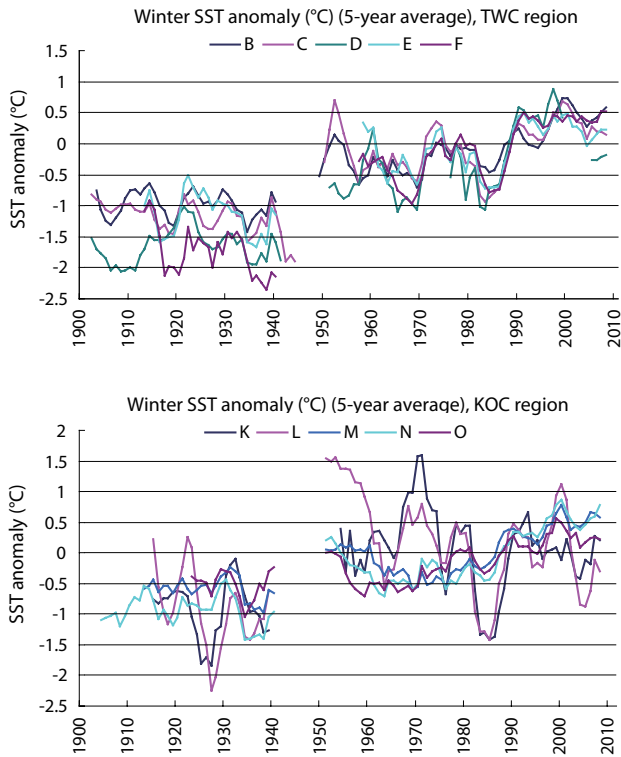


Fig. 2. Winter (Jan, Feb, Mar) sea surface temperature (SST) anomaly by area in the Tsushima Warm Current (TWC) and Kuroshio-Oyashio Current (KOC) regions, 1900-2010. The TWC region covers Area B (southern East China Sea), C (northern East China Sea), D (Yellow Sea), E (southern East Sea/Japan Sea), and F (middle East Sea/Japan Sea). The KOC region covers Area K (off of Sanriku), L (Kanto-E), M (Kanto-S), N (northern Shikoku-Tokai), and O (southern Shikoku-Tokai) (Japan Meteorological Agency 2011).

have been so marked (Gong et al. 2007, 2008), there can be little doubt that they reflect real changes in population abundance.

A comparison was performed using time series of hydro-climatic (AOI, ALPI, MOI, and SST) anomalies and

biological parameters (zooplankton biomass and year-to-year catch as abundance indices). Correlation coefficients between catch time series for the 7 species were calculated to examine the patterns in fluctuations among fish populations. Alternations of the dominant fish populations were examined for the TWC, KOC, and TWC + KOC regions.

RESULTS AND DISCUSSION

Climate and ocean regime shifts

The AOI showed decadal-scale variation patterns: distinct changes in 1971, 1977, and 1989. The wintertime ALPI showed a distinct change in 1977 from negative to positive values, indicating strengthening of the Aleutian Low after 1977. The wintertime MOI showed an abrupt change around 1987 from positive to negative anomalies, indicating the weakening Asian monsoon in the 1990s, while only slight changes occurred in the mid-1970s. The abrupt changes that occurred in 1976-1977 are common for AOI and ALPI, while the changes that occurred in the late 1980s (1988-1989) are common for AOI and MOI. These 3 indices also point to possible climate changes in the late 1990s (Fig. 1).

The winter (JFM) SST anomalies (5-year running average) in most areas of the TWC and KOC regions were far below the long-term average in the earlier period (1900s-1940s). The anomalies in the TWC region were below the average in the late 1960s and 1980s but far above the average in the 1990s and 2000s. The winter SST anomalies in the northern KOC region (Area K, Sanriku; and Area L, Kanto-east) were above the average in the 1950s and late 1960s and below the average in the 1980s. The winter SST anomalies in the TWC and KOC regions were above the

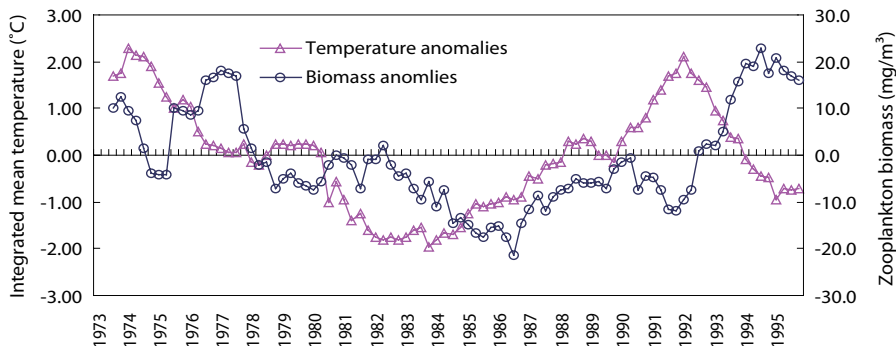


Fig. 3. Anomalies of the integrated mean temperature (triangle) from the surface to the 150-m layer and the zooplankton biomass (open circle) along the PM line (36° N, 136° E-44° N, 132° E) in the East Sea (Japan Sea), 1973-1998 (Minami et al. 1999).

average after the climate regime shift (1988-1989) and remained at high levels in the 1990s and 2000s (Fig. 2).

A positive MOI (+MOI) is associated with anomalously high pressure over the Asian Continent and intensified northwesterly winds which co-varies with the deep ALPI (+ALPI) and negative AOI (-AOI). Consequently, the intensified northwesterly winds transport cool and dry air masses over the Far East, which results in a severe winter and cool regime in the TWC and KOC regions as seen in the 1980s. The opposite situation is marked by a negative MO index (-MOI), indicating reduced northwesterly air flow. Simultaneously, the inflow of cold and dry air masses from the Asian Continent is reduced, resulting in mild winters and warm SST over the Far East as seen in the 1990s (Figs. 1 and 2).

Winter temperatures in the 50-m layer in the East Sea (Japan Sea) showed decadal variation patterns together with large inter-annual variations (Katoh et al. 2006). The cool regime in the 1980s and warm regime in the 1990s are clearly shown in the year-to-year strength anomalies of the TWC defined by the area $>10^{\circ}\text{C}$ in the 100-m layer in the East Sea (Japan Sea) during the period of 1961-2007 (Japan Meteorological Agency 2009).

The MOI is significantly correlated with winter SST in the TWC and KOC regions, suggesting that ocean variability is linked with the winter Asian monsoon. The oceanic shifts from the warm to cold regime in the mid-1970s and from the cold to warm regime in the late 1980s are associated with the climate regime shifts.

The inter-decadal variability of integrated (0-150-m layer) mean temperature and zooplankton biomass along the PM line in the TWC region was positively correlated with the 3-year time lag. Both variables were low during the 1980s after the climate regime shift (1976-1977) but increased after the regime shift (1988-1989) and remained higher than average during the warm regime in the 1990s (Fig. 3).

The abrupt climate changes that occurred in 1976-1977 are common for AOI and ALPI, while the changes occurred in the late 1980s (1988-1989) are common for AOI and MOI (Tian et al. 2004, King 2005). Year-to-year SST anomalies in the southern East Sea (Japan Sea; 34.5°N - 38°N) denoted the cool regime (1920s-1930s and 1980s), warm regime (1950s and 1990s-2000s), and the long-term increasing trends in the last century (Fig. 2). There was a cold period from the mid-1970s to the late 1980s, and then temperatures were high from the late 1980s to the early 2000s in the TWC region in the East China Sea and southern East Sea (Japan Sea) (Naganuma 1992, Katoh et al. 2006).

Decadal averaged winter SST anomalies in the East Sea

(Japan Sea) sawed a see-saw variation pattern spatially. Cold anomalies were limited to the TWC region in the south in the 1970s but then extended to the whole East Sea (Japan Sea) during the 1980s. The whole region became warm in the 1990s, and then the warm areas were reduced to the south during the 2000s. The time series of diatom abundance in the East Sea (Japan Sea) showed decadal variability and large inter-annual variations. Step change occurred in the spring diatom in 1979-1980 and 1991-1992 and in the autumn diatom in 1995-1996 (Tian et al. 2008).

Six climate regime shifts were detected in the northern hemisphere SST fields during the period from the 1910s to the 1990s: 1925-1926, 1945-1946, 1957-1958, 1970-1971, 1976-1977, and 1988-1989 (Yasunaka and Hanawa 2002). The 1976-1977 and 1988-1989 regime shifts have been described as major shifts having Pacific-wide impacts, while the 1957-1958 and 1970-1971 regime shifts have been described as minor shifts with limited ecological impacts (Yatsu et al. 2008). The time series of winter SST and the surface current velocity in the Kuroshio axis in the KOC region denoted the oceanic regime shifts in the mid-1970 and late 1980s (Tian et al. 2004). These results suggest that a distinct regime shift in the oceanographic conditions in the TWC region occurred in the 1976-1977 and 1988-1989 regime shifts.

The effects of the 1976-1977 and 1988-1989 climate regime shifts on regional ecosystems of the Northwestern Pacific (KOC region) from winter to spring can be summarized as follows:

After the climate regime shift in the mid-1970s (1976-1977), strong winter wind stress was associated with the deep Aleutian Low enhanced vertical mixing and cooling in the Oyashio region. Limited light intensity in the winter-spring seasons resulted in decreased biological production and delayed springtime blooming. The deep Aleutian Low enhanced vertical mixing and nutrient supply in the Kuroshio/subtropical region. Biological production decreased in the winter but increased in the spring, delaying the springtime bloom (Yatsu et al. 2008).

After the climate regime shift in the late 1980s (1988-1989), weak wind stress under the weakened Aleutian Low limited vertical mixing in the Oyashio region. Biological production increased in the winter-spring seasons under the strong light intensity and the springtime bloom occurred earlier than usual. As a result of the limited vertical mixing and nutrient supply in the Kuroshio/subtropical region, biological production increased in the winter but decreased in the spring. However, the springtime blooming occurred earlier than usual (Yatsu et al. 2008).

Distribution of pelagic fish populations and fishing nature

The 7 pelagic fish populations (Pacific herring, Pacific sardine, Japanese anchovy, jack mackerel, chub mackerel, Pacific saury, and common squid) inhabit the waters from the subtropic to the subarctic zone in the Northwest Pacific and its adjacent regions. They spawn in the southern part of their distribution range in the autumn, winter, and spring and then migrate to the north in the summer to feed in the northern part of their population area.

Pacific herring (*Clupea pallasii*) inhabit cold coastal zones. Pacific sardines (*Sardinops melanostictus*) are abundantly distributed from the coast to the open sea. Japanese anchovies (*Engraulis japonicus*) inhabit the coastal zone but are distributed in the offshore region during the abundant period. Both sardines and anchovies exhibit large expansions and contractions of distribution range concomitant with changes in abundance (Nakahara and Ogawa 1979, Lluch-Belda et al. 1989, Kuroda 1991, Watabe 1992a, 1992b, Kawasaki 2009).

Most of the 7 species are fished at the midpoint of their northward or southward migration. Fishing seasons of the 7 pelagic fishes are fairly different in the northwestern TWC region (off Korea). Chub mackerel (*Scomber japonicus*), jack mackerel (*Trachurus japonicus*), and Pacific sardines are fished in the TWC and KOC regions mainly using purse seine. Pacific saury (*Coloabis saira*) inhabit high haline warm water and have been fished mainly using gill nets (90%) in the TWC region (Gong et al. 1983, Gong and Suh 2004) but mainly using stick-held dip nets in the KOC region (Fukushima 1979, Kosaka 2000). Common squid (*Todarodes pacificus*) were fished mainly by jigging but

Table 1. Main fishing seasons and catch rates of the 7 pelagic fishes taken by main fishing gears in the western TWC region (off Korean peninsula)

Fish species	Fishing season	Fishing gear (catch rate, %)
	Period, 1971-2008	Period, 1956-2008
Pacific sardine	Spring, autumn	Purse seine (88.9), Set net (3.5)
Pacific saury	Spring, autumn	Gill net (92.0), Set net (1.2)
Chub mackerel	Autumn	Purse seine (89.6), Set net (2.7)
Common squid	Autumn	Jigging (53.6), Trawl net (29.0)
Jack mackerel	Spring-summer	Purse seine (69.1), Set net (12.6)
Anchovy	Summer-autumn	Drag net (52.7), Gill net (16.5)
Pacific herring	Autumn-winter	Purse seine (34.6), Gill net (33.5)

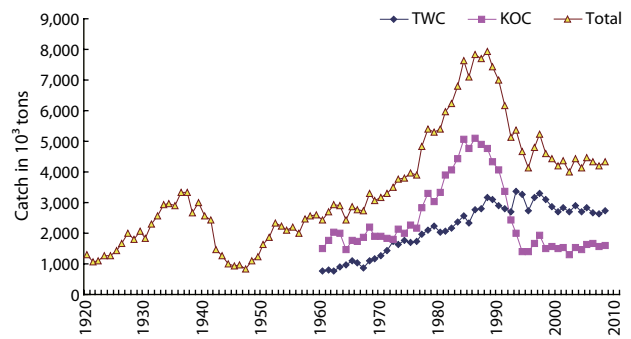


Fig. 4. Year-to-year total catch of the 7 pelagic fishes (Pacific herring, Pacific sardine, anchovy, jack mackerel, chub mackerel, Pacific saury, and common squid) in the Tsushima Warm Current (TWC), Kuroshio-Oyashio Current (KOC), and TWC + KOC (FAO area 61; north of 20° N, west of 175° W) regions in the period 1920-2008.

some (about 30%) by trawl in recent years (National Fisheries Research and Development Institute 2010).

Except in the main fishing seasons, most of the 7 pelagic fish species emigrate from their fishing grounds. Table 1 shows main fishing seasons and catch rates of the 7 pelagic fishes taken by main fishing gears in the western TWC region (off Korean peninsula).

Regional catch of the pelagic fish populations

Records of the fisheries targeting the 7 pelagic fish populations in the FAO Statistical Area 61 (north of 20° N, west of 175° W) date back to the early 1900s. Since the fishing operations by a certain country covers only small part of a population's large range, the catch rates of pelagic fish species by the fishing countries have remarkable monthly variations. Therefore, we collected all of the catches for the 7 species from all fishing countries in the Far East.

Year-to-year catches of the 7 pelagic fish populations from the FAO Area 61 are divided into 2 regions, the TWC (Yellow Sea, East China Sea and East Sea/Japan Sea) and the KOC (Northwestern Pacific and Okhotsk Sea), for the period of 1910-2008. The catches by Korea were from the TWC region and catches by Japan were from the KOC, and the TWC regions before 1951 and the catches after 1952 are from the TWC and KOC regions by all of the fishing countries (China/Taiwan, Korea, Japan, and Russia).

Year-to-year total catches of the 7 pelagic fishes in the TWC region steadily increased from 1,000,000 tons in the early 1960s to 3,000,000 tons in the late 1980s. The catch level was high (average 3,000,000 t) with large annual fluctuations for 11 years (1988-1998) and then slightly low (2,755,000 t) with small annual fluctuations for the next 10 years (1999-2008) (Fig. 4).

The total catch in the KOC region increased sharply from about 2,000,000 t in the mid-1970s to about 5,000,000 t in the mid-1980s. However, the catch decreased sharply in the early 1990s and then remained at the level of approximately 1,500,000 t after the mid-1990s. The catch level in the KOC region was generally higher than that in the TWC region before 1991 but was lower than that in the TWC region after 1992.

Year-to-year total catches of the 7 pelagic fish populations in the entire TWC + KOC (FAO, Area 61) region showed a peak amounting to approximately 3,300,000 t in the 1930s and then decreased to approximately 900,000 t in the mid-1940s. Thereafter, the total catch steadily increased to about 8,000,000 t in the mid-1980s and then decreased to 4,500,000 t in the 1990s and 2000s (Fig. 4). The 2 peaks in the year-to-year total catch in the whole area (TWC + KOC) of the 7 pelagic fish populations during the cool regimes in the mid-1930s and mid-1980s are attributed to the high abundance of Pacific sardine in the entire population range.

In the TWC and KOC regions, Pacific sardine catch increased after Pacific herring catch decreased in the late 1920s and late 1970s, and the anchovy catch increased soon after the sardine catch decreased in the late 1980s. These patterns of fluctuation in the Pacific herring population are completely out of phase with those of the Pacific sardine (Nakahara and Ogawa 1979, Kawasaki 1991). We can see a series of concurrences of a sardine peak (trough) and a herring trough (peak) as well as a sardine peak (trough) and an anchovy trough (peak), meaning that the 3 species are in opposite positions with regard to the climatic change.

In the mid-1970s, the northeastern Pacific changed from a cool anchovy regime to a warm sardine regime. A shift back to an anchovy regime occurred in the mid-to late 1990s (Chavez et al. 2003). In the mid-1970s, the northwestern Pacific changed from a warm anchovy regime to a cool sardine regime. A shift back to an anchovy regime occurred in the late 1980s (Lluch-Belda et al. 1989, Gong et al. 2008).

The chub mackerel catch increased soon after the jack mackerel catch decreased in the mid-1960s (Nakahara and Ogawa 1979, Takeshita and Hayashi 1991). Catches of Pacific saury and common squid were high during the warm regime in the 1950s-1960s and 1990s-2000s but were low during the cool regime in the mid-1970s and the 1980s. This switching of catches suggests alternations in abundance of the species related to the climate ocean change.

A large amount (half or one third) of the squid taken

in the TWC region (mainly East Sea/Japan Sea) landed at the fishing ports along the Pacific coast (KOC region) in the late 1960s and early 1970s and were recorded in the Yearbook of Fishery Statistics of Japan. The catches of squid taken in the TWC region that landed in the fishing ports along the Pacific coast were added to the TWC region counts. Therefore, actual catches of common squid in the KOC region were very low in the late 1960s and early 1970s but increased after the climate regime shift in the late 1980s (Gong et al. 2006, Gong and Choi 2008).

Correlation among catches of the 7 fish populations

Correlation coefficients among catches of the 7 pelagic fish populations are presented for the TWC, KOC, and TWC + KOC regions (Table 2).

In the TWC region, the catch of Pacific sardine shows a negative correlation with the catches of other 5 species (Pacific herring, anchovy, jack mackerel, Pacific saury, and common squid). In particular, the correlation between sardine and saury shows a significant negative value ($N = 46$, $r = -0.657$). The catch of anchovy shows a positive correlation with the catches of the other 3 species (jack mackerel, chub mackerel, and common squid). The catch of the chub mackerel shows a negative correlation ($N = 58$, $r = -0.529$) with that of the jack mackerel but a positive correlation ($N = 57$, $r = 0.674$) with that of common squid in the TWC region (Table 2).

In the KOC region, the catch of Pacific sardine shows a negative correlation with the catches of the other 5 species (Pacific herring, anchovy, jack mackerel, Pacific saury, and common squid) as in the TWC region. The catch of anchovy shows a positive correlation with the catches of the other 3 species (jack mackerel, Pacific saury, and common squid) but a negative correlation with the chub mackerel.

In particular, the correlation coefficients between the catches of Pacific herring and sardine ($N = 50$, $r = -0.534$), sardine and anchovy ($N = 50$, $r = -0.608$), sardine and jack mackerel ($N = 50$, $r = -0.557$), and chub mackerel and jack mackerel ($N = 58$, $r = -0.544$) show significantly negative correlations in the KOC region. The catch of chub mackerel shows a negative correlation with the catch of jack mackerel in the KOC region and the TWC region, suggesting that the 2 species are in strong competition.

In the entire population area (TWC + KOC), the catch of Pacific sardine shows a negative correlation with the catches of the other 5 species (Pacific herring, anchovy, jack mackerel, Pacific saury, and common squid), while

the catch of anchovy shows a positive correlation with the catches of the other 4 species (jack mackerel, chub mackerel, Pacific saury, and common squid). Correlation coefficients between any pair of the common squid, anchovy, and chub mackerel are high in the TWC and TWC + KOC regions, while the chub mackerel and common squid are negatively correlated in the KOC region. The correlation coefficients between the catch of jack mackerel and Pacific saury ($N = 83$, $r = 0.719$), jack mackerel and common squid ($N = 83$, $r = 0.724$), and Pacific saury and common squid ($N = 83$, $r = 0.643$) are significantly high in the whole population area (TWC + KOC regions), suggesting that the abundant periods of these 3 species occur simultaneously.

The abundant period (1960s and 1990s) of anchovy, jack mackerel, and common squid are fairly simultaneous in the TWC + KOC region as evidenced by the catch trend

and fairly high correlation coefficients. The catch of Pacific sardine shows a negative correlation with the catches of the other 5 species (Pacific herring, anchovy, jack mackerel, Pacific saury, and common squid) in the TWC, KOC as well as in the TWC + KOC regions, suggesting that the 5 species are strongly affected by the Pacific sardine in the entire population area.

Alternation of the dominant fish species

Since the catches of anchovy, jack mackerel, and Pacific saury are negatively correlated with that of Pacific sardine (Table 2) and the catches of all 3 species are comparatively small, a combined catch of the 3 species (C group) and the catch of chub mackerel (B group) were compared with that of the Pacific sardine (A group) (Fig. 5).

During the long period of 1910-2008 (99 years), an or-

Table 2. Correlation matrix of the annual catch fluctuation of the 7 pelagic fish populations in the Tsushima Warm Current (TWC), Kuroshio-Oyashio Current (KOC) and TWC + KOC regions

	1	2	3	4	5	6	7
TWC							
1. Pacific herring (1963-2008)	1	-0.355	0.063	-0.299	0.297	0.514	0.315
2. Pacific sardine (1963-2008)		1	-0.323	-0.373	0.096	-0.657	-0.268
3. Japanese anchovy (1963-2008)			1	0.207	0.353	-0.183	0.541
4. Jack mackerel (1953-2008)				1	-0.529	0.107	-0.177
5. Chub mackerel (1951-2008)					1	-0.115	0.674
6. Pacific saury (1954-2008)						1	0.208
7. Common squid (1952-2008)							1
KOC							
1. Pacific herring (1959-2008)	1	-0.534	0.383	0.362	0.073	-0.324	0.492
2. Pacific sardine (1959-2008)		1	-0.608	-0.557	0.171	-0.166	-0.586
3. Japanese anchovy (1959-2008)			1	0.379	-0.499	0.191	0.413
4. Jack mackerel (1953-2008)				1	-0.544	0.089	0.569
5. Chub mackerel (1951-2008)					1	-0.378	-0.401
6. Pacific saury (1959-2008)						1	0.182
7. Common squid (1952-2008)							1
TWC + KOC							
1. Pacific herring (1911-2008)	1	-0.444	-0.216	0.026	-0.125	-0.205	-0.278
2. Pacific sardine (1910-2008)		1	-0.149	-0.313	0.233	-0.081	-0.225
3. Japanese anchovy (1910-2008)			1	0.474	0.400	0.472	0.593
4. Jack mackerel (1926-2008)				1	0.193	0.719	0.724
5. Chub mackerel (1926-2008)					1	0.469	0.345
6. Pacific saury (1926-2008)						1	0.643
7. Common squid (1895-2008)							1

The period for each species is shown in parentheses.

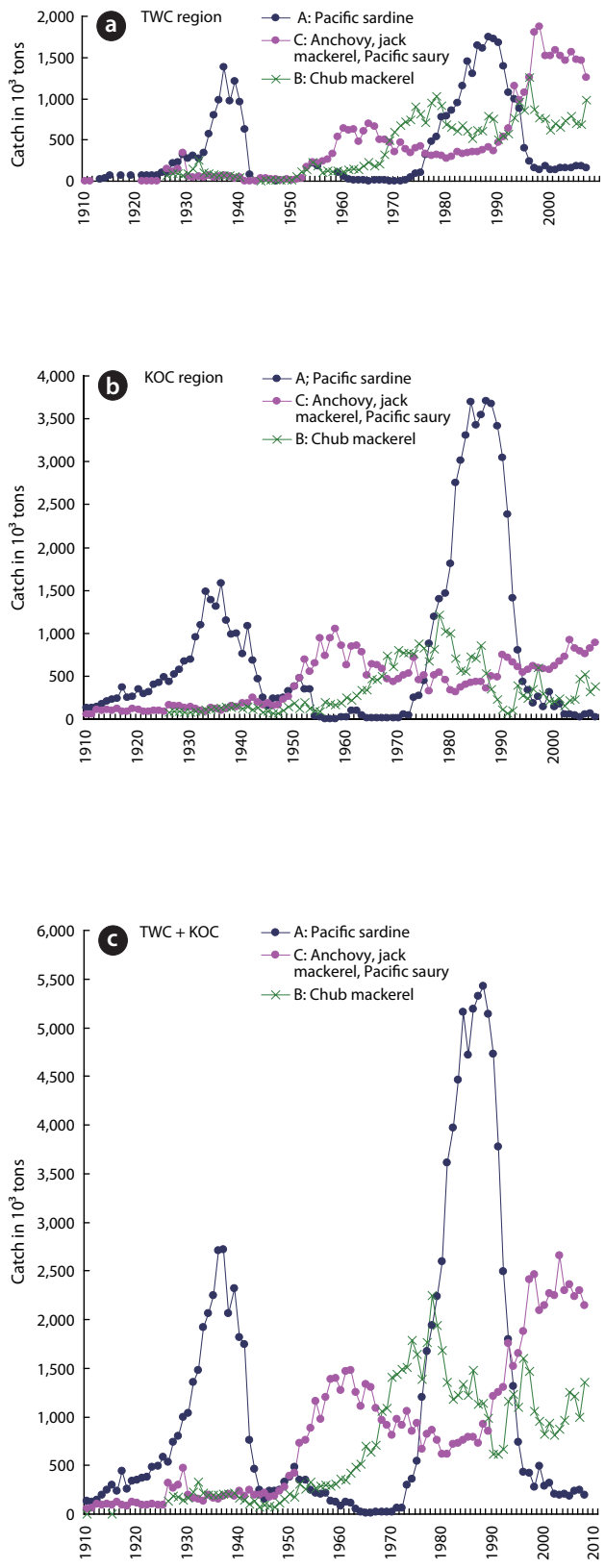


Fig. 5. Catches of pelagic fish species groups in the Tsushima Warm Current (TWC) region (a), Kuroshio-Oyashio Current (KOC) region (b), and TWC + KOC region (FAO Area 61) (c), 1910-2008.

derly alternation of the dominant pelagic fishes groups was observed in the TWC, KOC, and TWC + KOC regions. After the collapse of herring fishery in the late 1920s, the sardine (A group) dominated in the 1930s, and 3 other species (Pacific saury, jack mackerel, and Japanese anchovy) (C group) in the 1950s-1960s, chub mackerel (B group) in the 1970s, and then sardine (A group) again in the 1980s. As sardine (A group) biomass decreased in association with the climate shifts in the late 1980s, catches of the 3 other species (C group) increased immediately in the warm regime from the late 1980s to the 1990s (Fig. 5). The dominant period of the 7 species lasted for 10-20 years. However, a comparatively low catch of chub mackerel (C group) in the KOC region in the 1990s was noticed, suggesting that the fish population in the Pacific side declined or shifted to the TWC region (Gong et al. 2008).

Small pelagic schooling fish can respond dramatically and quickly to climatic variations (Hunter and Alheit 1995). Most such species are highly mobile, rely on short plankton-based food chains, are highly fecund, and have plasticity in growth, survival, and other life history traits. These biological characteristics make them sensitive to environmental forcing and are highly variable in abundance (Kawai 1987, Alheit and Hagen 1997). It has been suggested that most of the species exhibiting alternation of dominance are planktivore pelagic fishes that migrate in the large range. Pacific sardines feed on phytoplankton and zooplankton, while most of the small pelagic fishes feed on zooplankton and/or juveniles of fish.

An orderly succession of dominant (i.e., exhibiting greatest abundance) pelagic species has been observed in the KOC and California current systems (MacCall 1996), in the Humboldt system, and off the coast of South Africa. It is suggested that small pelagic fishes exhibit large expansion and contractions of range concomitant with changes in abundance (Nakahara and Ogawa 1979, Lluch-Belda et al. 1989, Kuroda 1991, Watabe 1992a, 1992b).

Chub mackerel and sardine extend their habitats from the north to the south; on the other hand, jack mackerel and anchovy extend from the south to the north when their population strengths increase in the waters off of Japan, suggesting that the former group developed in the northern waters while the latter group developed in the southern waters (Nakahara and Ogawa 1979). The oceanic shifts from warm to cold regimes in the 1970s and from cold to warm regimes in the late 1980s are associated with the climate regime shifts. During the cool regime between the regime shifts in 1977-1978 and 1988-1989, low temperature from the surface to the subsurface water in association with the deep Aleutian Low Pressure enhanced

the phytoplankton bloom in the spring; hence, the Pacific sardine population increased. During the warm regime (after the regime shift of 1988-1989), the warm temperature from the surface to the subsurface in association with the weakened Asian monsoon and positive AOI enhanced the production of zooplankton biomass and, therefore, the biomass of warm water pelagic fishes (e.g., Pacific saury, anchovy jack mackerel, common squid) increased. Quasi-decadal alternations in dominant species known as species replacement have been evident in association with the climate regime shifts over the last century.

Climate variation governed the alternating periods of the A group (Pacific sardine), B group (chub mackerel), and C group (Pacific saury, anchovy, jack mackerel). The alternation sequence was as follows: the Pacific herring collapse (1920s), followed by the A group (cool regime in the 1930s), the C group (in the 1950s-early 1960s), the B group (late 1960s to early 1970s), and then A group again (cool regime in the late 1970s to the early 1980s). As Pacific sardine (A group) biomass decreased in association with the climate regime shift (1988-1989), the abundance of the C group increased during the warm regime in the 1990s-2000s.

The periods appear to correspond to different periods of winter wind related to the Monsoon modes as outlined in the following 2 scenarios. In the first scenario, the group A (Pacific sardine) period, cold temperatures with negative SST anomalies in the Far East prevailed over to the +MOI with increased northwesterly winds, which are mainly responsible for the depth of the wind mixed layer and enhanced phytoplankton production in the spring (e.g., 1980s). This finding suggests that the collapse of the sardine population was caused not by over-fishing but by drastic recruitment failure in the 4 years after 1988, which in turn were attributed to environmental regime shifts (Watanabe et al. 1995, Ebisawa and Kinoshita 1998, Wada and Jacobson 1998, Noto and Yasuda 1999). During the deep winter mixed-layer years (e.g., 1980s), a phytoplankton bloom occurs in spring; in contrast, during the shallow winter mixed-layer years (e.g., 1990s), the bloom occurs in winter in the Kuroshio Extension region (Nishikawa and Yasuda 2008). It was suggested that the decline in the sardine population during the late 1980s to early 1990s was due to an insufficient spring food supply in the KE region in which sardine larvae and juveniles are transported.

In the second scenario, the group C (anchovy, jack mackerel, and Pacific saury) period, warm temperatures with positive SST anomalies prevailed over the -MOI with reduced northwesterly winds that are responsible for the

increased zooplankton biomass (e.g., 1990s). The group B (chub mackerel) period preceded the group A period. Therefore, the chub mackerel population (group B) is believed to be a successor of the C group (anchovy, Pacific saury, jack mackerel, and common squid) (Fig. 5) (Matsuda et al. 1992, Kuznetsov 1995, Yatsu et al. 2003).

ACKNOWLEDGMENTS

This study was funded by a research project of study on the consequences and countermeasures of the effect of climate change on marine ecosystems and fisheries resources of the National Fisheries Research and Development Institute (NFRDI) (RP-2012-ME-001). We are grateful to Dr. Y. Tian of the Japan Sea National Fisheries Research Institute, Niigata, Japan for providing information about the climate indices.

LITERATURE CITED

- Alheit J, Hagen E. 1997. Long-term climate forcing of European herring and sardine populations. *Fish Oceanogr* 6: 130-139.
- Beamish RJ. 1995. The need to understand the relationship between climate and the dynamics of fish populations. *Can Spec Publ Fish Aquat Sci* 121: 1-2.
- Chavez FP, Ryan J, Lluchi-Cota SE, Niquen CM. 2003. From anchovies to sardines and back: multidecadal change in the Pacific Ocean. *Science* 299: 217-221.
- Chikuni S. 1985. The Fish Resources of the Northwest Pacific. *FAO Fish Tech Pap* 266: 1-190.
- Ebisawa Y, Kinoshita T. 1998. Relationship of surface water temperature in Boso-Sanriku area sea and recruitment per spawning biomass of the Japanese sardine. *Bull Ibaragi Fish Exp Stn* 36: 49-55. (in Japanese)
- Fukushima S. 1979. Synoptic analysis of migration and fishing conditions of saury in the Northwestern Pacific Ocean. *Bull Tohoku Reg Fish Res Lab* 41: 1-70. (in Japanese)
- Gong Y, Choi KH. 2008. Fluctuations in abundance of common squid, *Todarodes pacificus* in the Far East. *J Environ Biol* 29: 449-452.
- Gong Y, Hirano T, Zhang CI. 1983. On the migration of Pacific saury in relation to oceanographic conditions off Korea. *Bull Jpn Soc Fish Oceanogr* 44: 51-75.
- Gong Y, Jeong HD, Choi KH, Seong KT, Kim SW. 2006. Fluctuations in the abundance of common squid, *Todarodes pacificus* and environmental conditions in the Far East

- regions during 52 years. *J Ecol Field Biol* 29: 1-16.
- Gong Y, Jeong HD, Suh YS, Park JW, Seong KT, Kim SW, Choi KH, Han IS. 2007. Fluctuations of pelagic fish populations in relation to climate shifts in the Far-East regions. *J Ecol Field Biol* 30: 23-38.
- Gong Y, Suh YS. 2004. Effect of environmental conditions on the stock structure and abundance of the Pacific saury, *Cololabis saira* in the Tsushima Warm Current region. *J Environ Sci* 13: 449-467.
- Gong Y, Suh YS, Han IS, Seong KT. 2008. Year-to-year and inter-decadal fluctuations in abundance of pelagic fish populations in relation to climate-induced oceanic conditions. *J Ecol Field Biol* 31: 45-67.
- Gong Y, Suh YS, Seong KT, Han IS. 2010. Climate Change and Marine Ecosystem. Academy Book, Seoul. (in Korean)
- Hare SR, Mantua NJ. 2000. Empirical evidence for North Pacific regime shifts in 1977 and 1989. *Prog Oceanogr* 47: 103-145.
- Hunter JR, Alheit J. 1995. International GLOBEC Small Pelagic Fishes and Climate Change Program. Report of the First Planning Meeting, 1994 June 20-24, La Paz. GLOBEC Report No. 8. pp. 1-72.
- Japan Meteorological Agency. 2009. <http://www.data.kishou.go.jp/kaiyou/db/maizuru/knowledge/seiryoku.html>. Accessed 13 October 2009.
- Japan Meteorological Agency. 2011. <http://www.data.knowledge.kishou.go.jp/kaiyou>. Accessed 9 September 2011.
- Katoh O, Nakagawa N, Matsui S, Yamada H, Watanabe T. 2006. Long-term fluctuations of water temperature in the Japan Sea and Tsushima Strait shown by data from prefectural oceanographic observations along the coastal and offshore measurement lines. *Bull Coast Oceanogr* 44: 19-24. (in Japanese).
- Kawai T. 1987. A study on variability of marine teleost resources from a viewpoint of comparative ecology. *Bull Tokai Reg Fish Res Lab* 122: 49-127. (in Japanese)
- Kawasaki T. 1983. Why do some pelagic fishes have wide fluctuations in their numbers? Biological basis of fluctuation from the viewpoint of evolutionary ecology. *FAO Fish Rep* 291: 1065-1080.
- Kawasaki T. 1991. Long-term variability in the pelagic fish populations. In: *Long-term Variability of Pelagic Fish Populations and Their Environment* (Kawasaki T, Tanaka S, Toba Y, Taniguchi A, eds). Pergamon Press, Oxford, pp 47-60.
- Kawasaki T. 1992. Mechanisms governing fluctuations in pelagic fish populations. *S Afr J Mar Sci* 12: 873-879.
- Kawasaki T. 2009. *Sardines and Climate Change: For Future Fisheries*. Iwanami Shinsho, Tokyo. (in Japanese)
- King JR. 2005. Report of the study group on fisheries and ecosystem responses to recent regime shifts. *PICES Sci Rep* 28: 1-162.
- Klyashtorin LB. 2001. Climate change and long-term fluctuations of commercial catches: the possibility of forecasting. *FAO Fish Tech Pap* 410: 1-86.
- Kosaka S. 2000. Life history of Pacific saury *Cololabis saira* in the Northwest Pacific and consideration of resource fluctuations based on it. *Bull Tohoku Natl Fish Res Inst* 63: 1-96. (in Japanese)
- Kuroda K. 1991. On the distribution of Japanese sardine, *Sardinops melanostictus* (Schlegel), in the Yellow Sea and the East China Sea. *Bull Jpn Soc Fish Oceanogr* 55: 169-171. (in Japanese)
- Kuznetsov VV. 1995. Influence of climate changes on succession processes in the community of neritic pelagic fishes in the Kuroshio-Oyashio zone. *Can Spec Pub Fish Aquat Sci* 121: 395-404.
- Lluch-Belda D, Crawford RJM, Kawasaki T, MacCall AD, Parrish RH, Schwartzlose RA, Smith PE. 1989. World-wide fluctuations of sardine and anchovy stocks: The regime problem. *S Afr J Mar Sci* 8: 195-205.
- MacCall AD. 1996. Patterns of low frequency variability in fish populations of the California Current. *CalCOFI Rep* 37: 100-110.
- Matsuda H, Wada T, Takeuchi Y, Matsumiya Y. 1991. Alternative models for species replacement of pelagic fishes. *Res Popul Ecol* 33: 41-56.
- Matsuda H, Wada T, Takeuchi Y, Matsumiya Y. 1992. Model analysis of the effect of environmental fluctuation on the species replacement pattern of pelagic fishes under interspecific competition. *Res Popul Ecol* 34: 309-319.
- Minami H, Kawae S, Nagai N, Jifuku J. 1999. Long-term variability of oceanic conditions along the PM line in the Japan Sea. *Sokko Jiho* 66: 63-80. (in Japanese)
- Naganuma K. 1992. Variations in the ocean environments related to the variations in the fisheries resources. *Bull Jpn Soc Fish Oceanogr* 56: 168-172. (in Japanese)
- Nakahara T, Ogawa Y. 1979. Alternations of dominant species in pelagic fish community. 1. Modes of long-term fluctuation of population and changes of areas of distribution. *Bull Jpn Soc Fish Oceanogr* 34: 21-31. (in Japanese).
- National Fisheries Research and Development Institute (NFRDI). 2010. *Ecology and Fishing Ground of Fisheries Resources in Korean Waters*. NFRDI, Busan. (in Korean)
- Nishikawa H, Yasuda I. 2008. Japanese sardine (*Sardinops melanostictus*) mortality in relation to the winter mixed layer depth in the Kuroshio Extension region. *Fish Oceanogr* 17: 411-420.
- Noto M, Yasuda I. 1999. Population decline of the Japanese

- sardine, *Sardinops melanostictus*, in relation to sea surface temperature in the Kuroshio Extension. *Can J Fish Aquat Sci* 56: 973-983.
- Schwartzlose RA, Alheit J, Bakun A, Baumgartner TR, Cloete R, Crawford RJM, Fletcher WJ, Green-Ruiz Y, Hagen E, Kawasaki T, Lluch-Belda D, Lluch-Cota SE, MacCall AD, Matsuura Y, Nevarez-Martinez MO, Parrish RH, Roy C, Serra R, Shust KV, Ward MN, Zuzunaga JZ. 1999. World-wide large-scale fluctuations of sardine and anchovy populations. *S Afr J Mar Sci* 21: 289-347.
- Takeshita K, Hayashi K. 1991. Interaction between horse mackerel and common mackerel in the East China Sea, suggested by their catch trends and distribution areas, In: Long-term Variability of Pelagic Fish Populations and Their Environment (Kawasaki T, Tanaka S, Toba Y, Taniguchi A, eds). Pergamon Press, Oxford, pp 173-179.
- Tian Y, Kidokoro H, Watanabe T. 2006. Long-term changes in the fish community structure from the Tsushima warm current region of the Japan/East Sea with an emphasis on the impacts of fishing and climate regime shift over the last four decades. *Prog Oceanogr* 68: 217-237.
- Tian Y, Kidokoro H, Watanabe T, Iguchi N. 2008. The late 1980s regime shift in the ecosystem of Tsushima warm current in the Japan/East Sea: evidence from historical data and possible mechanisms. *Prog Oceanogr* 77: 127-145.
- Tian Y, Ueno Y, Suda M, Akamine T. 2004. Decadal variability in the abundance of Pacific saury and its response to climatic/oceanic regime shifts in the northwestern subtropical Pacific during the last half century. *J Mar Syst* 52: 235-257.
- Wada T, Jacobson LD. 1998. Regimes and stock recruitment relationships in Japanese sardine (*Sardinops melanostictus*), 1951-1995. *Can J Fish Aquat Sci* 55: 2455-2463.
- Watabe T. 1992a. Ecological adaptation of common mackerel and another important pelagic fishes with fluctuation in the population. *Bull Jpn Soc Fish Oceanogr* 56: 463-468. (in Japanese)
- Watabe T. 1992b. Alternation in relative abundance of the pelagic fish populations with large yield viewed from the reproduction and recruitment. *Bull Jpn Soc Fish Oceanogr* 56: 505-514. (in Japanese)
- Watanabe Y, Zenitani H, Kimura R. 1995. Population decline of Japanese sardine *Sardinops melanostictus* owing to recruitment failures. *Can J Fish Aquat Sci* 52: 1609-1616.
- Yasunaka, S, Hanawa K. 2002. Regime shifts found in the Northern Hemisphere SST field. *J Meteorol Soc Jpn* 80: 119-135.
- Yatsu A, Aydin KY, King JR, McFarlane GA, Chiba S, Tadokoro K, Kaeriyama M, Watanabe Y. 2008. Elucidating dynamic responses of North Pacific fish populations to climatic forcing: influence of life-history strategy. *Prog Oceanogr* 77: 252-268.
- Yatsu A, Nagasawa K, Wada T. 2003. Decadal changes in abundance of dominant pelagic fishes and squids in the Northwestern Pacific Ocean since the 1970s and implications to fisheries management. *Trans Am Fish Soc Symp* 38: 675-684.
- Yatsu A, Watanabe T, Ishida M, Sugisaki H, Jacobson LD. 2005. Environmental effects on recruitment and productivity of Japanese sardine *Sardinops melanostictus* and chub mackerel *Scomber japonicus* with recommendations for management. *Fish Oceanogr* 14: 263-278.