



Assessment of genetic diversity and distance of three *Cicuta virosa* populations in South Korea

Bo Eun Nam¹, Jae Geun Kim^{1,*} and Cha Jeong Shin²

¹Department of Biology Education, Seoul National University, Seoul 151-748, Korea

²Busan Nam High School, Busan 606-809, Korea

Abstract

Cicuta virosa L. (Apiaceae) is a perennial emergent plant designated as an endangered species in South Korea. According to the former records, only four natural habitats remain in South Korea. A former study suggested that three of four populations (Pyeongchang: PC, Hoengseong: HS, Gunsan: GS) would be classified as different ecotypes based on their different morphological characteristics and life cycle under different environmental conditions. To evaluate this suggestion, we estimated genetic diversity in each population and distance among three populations by random amplification of polymorphic DNA. Seven random primers generated a total of 61 different banding positions, 36 (59%) of them were polymorphic. Nei's gene diversity and the Shannon diversity index increased in the order of PC < HS < GS, which is the same order of population size. In the two-dimensional (2D) plot of first two principal components in principal component analysis with the presence of 61 loci, individuals could be grouped as three populations easily (proportion of variance = 0.6125). Nei's genetic distance for the three populations showed the same tendency with the geographical distance within three populations. And it is also similar to the result of discriminant analysis with the morphological or life-cycle factors from the previous study. From the results, we concluded that three different populations of *C. virosa* should be classified as ecotypes based on not only morphology and phenology but genetic differences in terms of diversity and distance as well.

Keywords: ecotype, genetic distance, RAPD, water hemlock

INTRODUCTION

Cicuta virosa L. (Apiaceae) is a perennial emergent plant that has toxic substance (cicutoxin) in its roots and tubers (Panter et al. 1988). It disperses by its overwintering rootstocks or buoyant fruits (Mulligan and Munro 1981). Natural populations of *C. virosa* were found at north and central Europe, northern Asia, northern America (Fig. 1a, Mulligan and Munro 1981, Lee 2003). South Korea is a southern marginal area of distribution, population size of *C. virosa* has decreased (Shin et al. 2013). Under the experimental condition with elevated CO₂ concentration and temperature according to the general climate change

scenario, the timing of flowering, flower stalk forming and seed formation were earlier than the control condition and germination rate of self-pollinated seeds were higher at experimental condition (Hong 2012). Therefore, long-term climate change seems to be able to affect the phenology of *C. virosa*. Several countries (e.g., Japan, Hungary) have designated *C. virosa* as a protected species (Tatar 2010, Japanese Wildlife Research Association 2012), and *C. virosa* also has been designated as a domestic endangered species in Korea (Korea National Arboretum 2012).

Former studies about *C. virosa* mainly have concentrat-

Open Access <http://dx.doi.org/10.5141/ecoenv.2013.205>

This is an Open Access article distributed under the terms of the Creative Commons Attribution Non-Commercial License (<http://creativecommons.org/licenses/by-nc/3.0/>) which permits unrestricted non-commercial use, distribution, and reproduction in any medium, provided the original work is properly cited.

Received 05 August 2013, Accepted 08 September 2013

*Corresponding Author

E-mail: jaegkim@snu.ac.kr

Tel: +82-2-880-7896

www.kci.go.kr

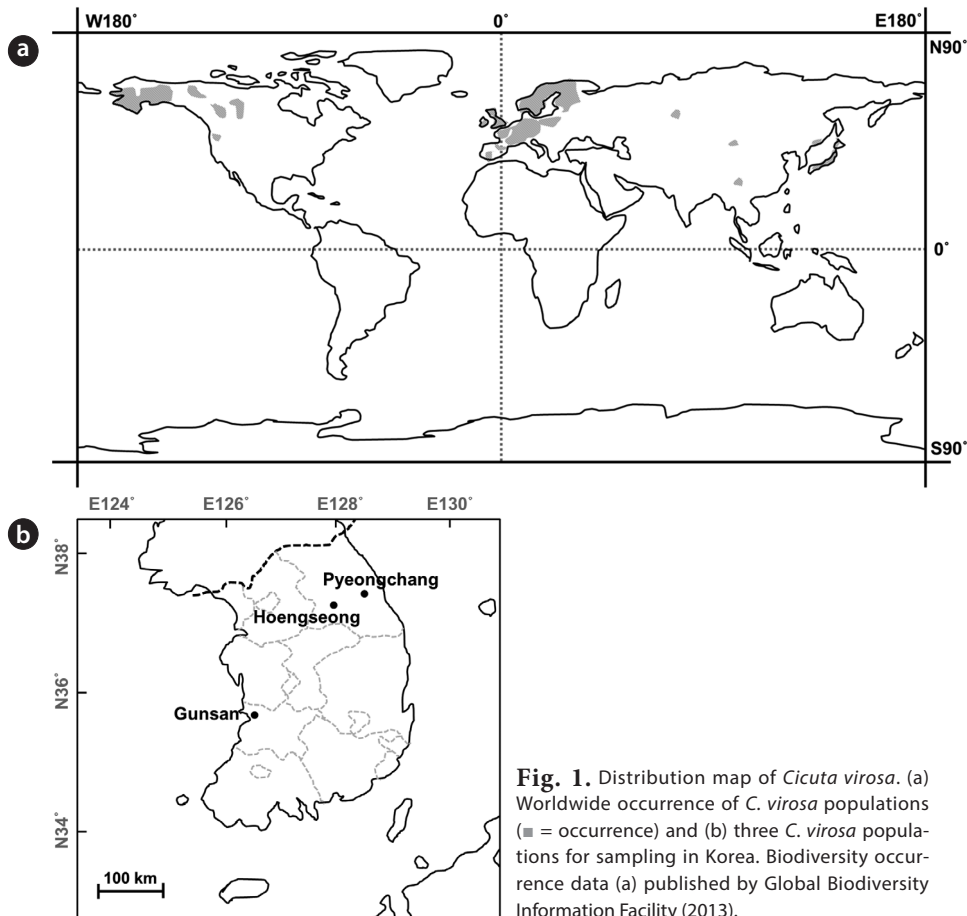


Fig. 1. Distribution map of *Cicuta virosa*. (a) Worldwide occurrence of *C. virosa* populations (■ = occurrence) and (b) three *C. virosa* populations for sampling in Korea. Biodiversity occurrence data (a) published by Global Biodiversity Information Facility (2013).

ed on toxicology or pharmacology of cicutoxin (Sarreveld and Hope 1975, Strauß et al. 1996). *C. virosa* requires wet substrate and this requirement limits its habitat range such as streams, ditches, lakes, rivers or marshy areas (Panter et al. 1988). In South Korea, only four natural habitats of *C. virosa* were remained and their water and soil conditions were similar to the optimal environmental range of their accompanying species. However, only the water level was different from optimal range of others (Shin et al. 2013). Three of four populations in Korea (except the smallest and rapidly decreasing population) were suggested to be classified as different ecotypes based on their different morphological characteristics and phenology under different environmental conditions (Shin and Kim 2013).

Understanding of the genetic structure of vulnerable species is important to formulate sustainable conservation strategy (Ellstrand and Elam 1993, Lee et al. 2004, Kim et al. 2008). Several molecular analysis tools, such as DNA sequencing, random amplification of polymorphic DNA

(RAPD), inter simple sequence repeat (ISSR), and amplified fragment length polymorphism (AFLP) has been utilized in ecological studies (Beebee and Graham 2008). To study the genetic difference among three populations, we used the RAPD method that has been used for investigating the genetic diversity and structure of populations and that is independent to the former knowledge of their DNA sequence (Williams et al. 1990, Newbury and Ford-Lloyd 1993, Beebee and Graham 2008). This method has been used for understanding the formation and maintenance of natural plant populations (Bonnin et al. 1996, Min et al. 2012), intraspecific phylogenetic studies (Kim et al. 2008, Ok and Yoo 2012), and genetic difference among the varieties or ecotypes (Virk et al. 1995, Ray and Roy 2009, Arghavani et al. 2010).

The aim of this study is to assess the genetic diversity within three *C. virosa* populations in Korea and the differences among them using RAPD markers and to understand the relationship between the genetic difference and ecotypic differences of Shin and Kim (2013). The sugges-

tion to classify the three *C. virosa* populations as ecotypes would be able to be supported with the result of this study of the genetic difference.

MATERIALS AND METHODS

Sampling sites and populations description

Only four natural habitats of *C. virosa* were reported in South Korea and sampling was conducted at three of the four habitats (Fig. 1b). Pyeongchang (PC) was a wet meadow that located at 793 m above sea level, and accompanying species with *C. virosa* was *Scirpus radicans*. At Hoengseong (HS), two subpopulations (12-year-old abandoned paddy field and streamlet) were located with about 700 m distance. *Persicaria thunbergii* was a major accompanying species at the abandoned paddy field and *Phragmites japonica* at the streamlet. Gunsan (GS) was a reservoir which located at relatively low latitude than PC and HS. *C. virosa* has been lived on the floating mat with *Zizania latifolia* and *Paspalum distichum*. The major accompanying species at GS was *Z. latifolia*. Population sizes in PC, the abandoned paddy field at HS, streamlet at HS and GS were <40, 170, 70, >500, respectively (see Shin et al. 2013 for detailed description). Population in Gangneung was excluded for sampling because of its small population size (<10).

Seed sampling and germination

At the year of 2012, after the flowering time of each three populations, seeds of the senescent *C. virosa* individuals were collected randomly from more than 5 individuals. Seeds were stored at 4°C until the germination. Collected seeds were germinated in a growth chamber, on the wet filter paper in petri dishes. Each cycle of light and

temperature condition was kept in 12 hours interval, light (at 30°C) and dark (at 15°C) for a week.

RAPD-PCR

After about a week from the germination, five seedlings were randomly collected in each of three populations. Each sample size of them was determined in previous studies about the distinction among ecotypes using RAPD markers (Milella et al. 2006, Ray and Roy 2009, Arghavani et al. 2010). Whole genomic DNA extraction was followed with DNeasy Plant Mini Kit (Qiagen, Hilden, Germany) according to manufacturer's protocol.

PCR for RAPD analysis was conducted with AccuPower PCR premix (Bioneer, Daejeon, South Korea). Total reaction volume of PCR was 20 µL, composed of 1 µL of DNA extracted from each seedling, 1 µL of primer (10 pmol), and 18 µL of deionized water. Seven of 33 random primers (Bioneer) which showed the polymorphism in electrophoresis were selected for RAPD analysis (Table 1). Reaction cycle of PCR began with the 2 min of denaturation at 94°C. 40 cycles were followed with 45 s of denaturation at 94°C, 45 s of annealing at the T_m of each primer, and 1 min 30 s of elongation at 72°C. Lastly, 2 min of the final extension step at 72°C was followed.

Electrophoresis of amplified fragments was conducted in 1% agarose gel stained with GelRed™ (Biotium, Hayward, CA, USA). Under the UV light, bands were observed and recorded by binary character matrix with 1 (presence) and 0 (absence).

Data analysis

Genetic diversity within the population (number of polymorphic loci, Nei's gene diversity: h , Shannon index: i), genetic distance (Nei's genetic distance) among populations and unweighted pair-group method with arith-

Table 1. Random primer sequences and number of amplified RAPD fragments

Oligonucleotide Name	Sequence	T_m (°C)	No. of observed band loci
N-8001	CAGGCCCTTC	34	7 (3')
N-8002	CAATCGCCGT	32	8 (5')
N-8004	TCGGCGATAG	32	11 (9')
N-8005	GAAACGGGTG	32	12 (4')
N-8010	CTGAGACGGA	32	5 (3')
N-8075	GAGGTCCACA	32	9 (4')
N-8078	GTGTGCCGTT	32	9 (8')

Number in the parenthesis is the number of polymorphic bands for each primer.

metic averages (UPGMA) dendrogram were calculated by Popgen32 with the binary matrix data (Yeh and Boyle 1997). Principal component analysis (PCA) with presence and absence of each band was conducted by R ver. 2.15.0 (R Development Core Team 2013).

RESULT AND DISCUSSION

Genetic diversity among individuals of three populations

61 band loci were detected from seven random primers and 36 loci (59%) of them were shown to be polymorphic. 10 (28%) of 36 polymorphic loci appeared only one or two populations. DNA sequence of these specific loci could be able to design the population-specific markers (Ray and Roy 2009).

In three populations, average of Nei's gene diversity (*h*) was 0.0747, and it of Shannon index (*i*) was 0.1115. GS was shown to be the highest gene diversity (Table 2).

In GS, the population size of *C. virosa* in 2011 over 500 individuals was largest in three populations. Population sizes of it at abandoned paddy field and Narrow stream-let of HS were about 170 and 70, respectively. PC has the smallest size, less than 40 individuals (Shin et al. 2013). Genetic diversity of the randomly selected seeds from three *C. virosa* populations also seems to be affected by their population size at natural habitat (Ellstrand and Elam 1993, Frankham 1996, Fischer et al. 2000, Kim et al. 2008).

From the result of PCA with band presence and absence of 61 loci, 5 principal components had 83% of total variance and proportion of variance of major 9 principal components was 95%. On the 2D plot of major two principal components (PC1, PC2), three populations were clearly separated and grouped within each population (Fig. 2). This result implies that three populations could be grouped based on the RAPD-PCR results.

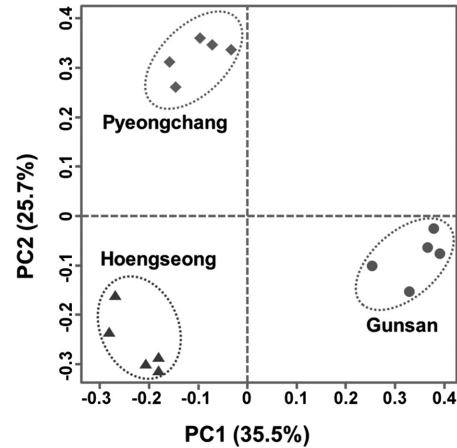


Fig. 2. 2D plot of principal component analysis (PCA) of 15 seedlings with presence and absence of 61 band loci. 15 individuals are plotted at the first two principal components.

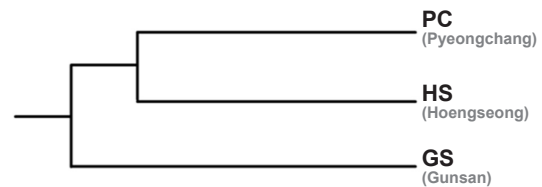


Fig. 3. UPGMA dendrogram based on Nei's genetic distance for the three populations of *Cicuta virosa*. Nei's genetic distances were PC-HS = 0.1999, PC-GS = 0.2331, and HS-GS = 0.2618.

Genetic distance among three populations

Genetic distance among three populations based on Nei's genetic distance was the highest between HS and GS (0.2618). The shortest distance was between PC and HS (0.1999), and the distance between PC and GS was 0.2331. GS seems to be genetically apart from PC and HS in the UPGMA dendrogram from the RAPD markers (Fig. 3).

PC and HS are located in Gangwon province, the eastern part of Korean peninsula, whereas GS is located in Jeollabuk province, adjacent to the western sea of Korea

Table 2. Number of polymorphic loci and percentage, Nei's gene diversity (*h*), and Shannon index (*i*) in three populations

Population	No. of polymorphic loci (%)	No. of specific band loci	<i>h</i>	<i>i</i>
PC	12 (19.7)	2	0.0646	0.0985
HS	12 (19.7)	3	0.0674	0.1016
GS	14 (23.0)	5	0.0920	0.1343
Total [*]	36 (59.0)	10	0.2020	0.3005

^{*}Total does not mean the sum of polymorphic loci numbers of three populations but the total loci number which considers overlapped loci among populations.

and the reservoir is located on relatively lower latitude than PC and HS. Straight-line distances between PC and HS, PC and GS, HS and GS are about 50 km, 261 km and 218 km, respectively. Genetic distance among populations could be increased similar to the increasing of the geographic distance when genetic flow among populations and genetic drift in each population make equilibrium (Hutchinson and Templeton 1999). Based on the genetic and geographic distance among three populations, GS seems they had been separated earlier from the common ancestor than the other two populations.

Ecotypic characteristics such as seed length and weight, flowering time, and sensitivity about the moisture stress were significantly different among three populations (Shin and Kim 2013). However, such as root:shoot (R:S) ratio or relative growth rate (RGR) in length in GS was significantly different from HS and PC, whereas the two populations (HS and PC) were not significantly different from each other. In addition, as a result of a 2D plot of the discriminant analysis, GS was relatively away from HS and PC (Shin and Kim 2013). This result seems to be affected from the genetic distance among three populations.

CONCLUSION

Based on the RAPD analysis, genetic diversity in each population seems to be affected from their population size and some polymorphic loci appeared only one or two populations. In a result of PCA with the band presence, three populations were separated from each other and grouped within each population on 2D plot. In addition, genetic distance among three populations was associated to their geographic distance and it also corresponds to the Shin and Kim's study (2013) about the morphological and phenological characteristics. In conclusion, we suggest it is possible to distinguish the *C. virosa* individuals into three populations by the result of RAPD-PCR and this support the suggestion of classifying three populations as different ecotype.

ACKNOWLEDGEMENT

This study was supported by the Korea Ministry of Environment as "The Eco-Innovation project, 416-111-010" and by the Center for Aquatic Ecosystem Restoration (CAER) of the Eco-STAR project from the Ministry of Environment, Republic of Korea (MOE;08-III-12).

LITERATURE CITED

- Arghavani A, Asghari A, Shokrpour M, Chamanabad M. 2010. Genetic diversity in ecotypes of two *Agropyron* species using RAPD markers. *Res J Environ Sci* 4: 50-56.
- Beebe T, Graham R. 2008. *An Introduction to Molecular Ecology*, 2nd ed. Oxford University Press, Oxford.
- Bonnin I, Huguet T, Gherardi M, Proserpi JM, Olivieri I. 1996. High level of polymorphism and spatial structure in a selfing plant species, *Medicago truncatula* (Leguminosae), shown using RAPD markers. *Am J Bot* 83: 843-855.
- Ellstrand NC, Elam DR. 1993. Population genetic consequences of small population size: implications for plant conservation. *Ann Rev Ecol Syst* 24: 217-242.
- Fischer M, Husi R, Prati D, Peintinger M, van Kleunen M, Schmid B. 2000. RAPD variation among and within small and large population of the rare clonal plant *Ranunculus reptans* (Ranunculaceae). *Am J Bot* 87: 1128-1137.
- Frankham R. 1996. Relationship of genetic variation to population size in wildlife. *Conserv Biol* 10: 1500-1508.
- Global Biodiversity Information Facility. 2013. GBIF data portal. <http://data.gbif.org>. Accessed 5 September 2013.
- Hong YS. 2012. Effects of elevated CO₂ concentration and temperature on the phenology, growth response and reproductive ecology of *Cicuta virosa*, endangered plant in Korea. MS Thesis. Kongju University, Gongju, Korea. (in Korean)
- Hutchison DW, Templeton AR. 1999. Correlation of pairwise genetic and geographic distance measures: inferring the relative influences of gene flow and drift on the distribution of genetic variability. *Evolution* 53: 1898-1914.
- Japanese Wildlife Research Association. 2012. In: Search system of Japanese RED data. <http://www.jpnrdb.com/search.php?mode=map&q=06031083218>. Accessed 7 June 2012. (in Japanese)
- Kim C, Na HR, Choi HK. 2008. Genetic diversity and population structure of endangered *Isoetes coreana* in South Korea based on RAPD analysis. *Aquat Bot* 89: 43-49.
- Korea National Arboretum. 2012. Korea biodiversity information system. <http://www.nature.go.kr/wkbik1/wkbik1312.leaf?hback=true&plntIstrNo=24409#.UdoDCTsvnTo>. Accessed 8 July 2013. (in Korean)
- Lee CB. 2003. *Colored Flora of Korea*. Hyangmoonsa, Seoul. (in Korean)
- Lee S, Ma S, Lim Y, Choi HK, Shin H. 2004. Genetic diversity and its implications in the conservation of endangered *Zostera japonica* in Korea. *J Plant Biol* 47: 275-281.
- Milella L, Saluzzi D, Lapelosa M, Bertino G, Spada P, Greco I, Martelli G. 2006. Relationships between an Italian strawberry ecotype and its ancestor using RAPD mark-

- ers. Genet Resour Crop Ev 53: 1715-1720.
- Min SJ, Kim HT, Kim JG. 2012. Assessment of genetic diversity of *Typha angustifolia* in the development of cattail stands. J Ecol Field Biol 35: 27-34.
- Mulligan GA, Munro DB. 1981. The biology of Canadian weeds: 48. *Cicuta maculata* L., *C. douglasii* (DC.) Coult. & Rose and *C. virosa* L. Can J Plant Sci 61: 93-105.
- Nei M. 1973. Analysis of gene diversity in subdivided populations. Proc Natl Acad Sci USA 70: 3321-3323.
- Newbury HJ, Ford-Lloyd BV. 1993. The use of RAPD for assessing variation in plants. Plant Growth Reg 12: 43-51.
- Ok GH, Yoo KO. 2012. Habitats ecological characteristics of *Asplenium scolopendrium* L. and its RAPD Analysis. Korean J Plant Res 25: 719-730.
- Panther KE, Keeler RF, Baker DC. 1988. Toxicoses in livestock from the hemlocks (*Conium* and *Cicuta* spp.). J Anim Sci 66: 2407-2413.
- R Development Core Team. 2013. R: a language and environment for statistical computing. R Foundation for Statistical Computing, Vienna, Austria. URL <http://www.R-project.org/>. Accessed 8 July 2013.
- Ray T, Roy SC. 2009. Genetic diversity of *Amaranthus* species from the Indo-Gangetic plains revealed by RAPD analysis leading to the development of ecotype-specific SCAR marker. J Hered 100: 338-347.
- Sarrevelde E, Hope E. 1975. Cicutoxin poisoning (water hemlock). Neurology 25: 730-734.
- Shin CJ, Nam JM, Kim JG. 2013. Comparison of environmental characteristics at *Cicuta virosa* habitats, an endangered species in South Korea. J Ecol Environ 36: 19-30.
- Shin CJ, Kim JG. 2013. Ecotypic differentiation in seed and seedling morphology and physiology among *Cicuta virosa* populations. Aquat Bot. DOI 10.1016/j.aquabot.2013.06.005.
- Strauß U, Wittstock U, Schubert R, Teuscher E, Jung S, Mix E. 1996. Cicutoxin from *Cicuta virosa*: a new and potent potassium channel blocker in T Lymphocytes. Biochem Biophys Res Commun 219: 332-336.
- Tatar S. 2010. Seed longevity and germination characteristics of six fen plant species. Acta Biol Hung 61: 197-205.
- Virk PS, Ford-Lloyd BV, Jackson MT, Newbury HJ. 1995. Use of RAPD for the study of diversity within plant germplasm collections. Heredity 74: 170-179.
- Williams JGK, Kubelik AR, Livak KJ, Rafalski JA, Tingey SV. 1990. DNA polymorphisms amplified by arbitrary primers are useful as genetic markers. Nucleic Acids Res 18: 6531-6535.
- Yeh FC, Boyle TJB. 1997. Population genetic analysis of co-dominant and dominant markers and quantitative traits. Belg J Bot 129: 157.