

Uranium Particle Identification with SEM-EDX for Isotopic Analysis by Secondary Ion Mass Spectrometry

Fumitaka Esaka* and Masaaki Magara

Research Group for Safeguards Analytical Chemistry, Japan Atomic Energy Agency (JAEA), 2-4 Shirakata, Tokai, Naka, Ibaraki 319-1195, Japan

Received June 06, 2016; Accepted June 09, 2016

First published on the web June 30, 2016; DOI: 10.5478/MSL.2016.7.2.41

Abstract : Secondary ion mass spectrometry (SIMS) is a promising tool to measure isotope ratios of individual uranium particles in environmental samples for nuclear safeguards. However, the analysis requires prior identification of a small number of uranium particles that coexist with a large number of other particles without uranium. In the present study, this identification was performed by scanning electron microscopy - energy dispersive X-ray analysis with automated particle search mode. The analytical results for an environmental sample taken at a nuclear facility indicated that the observation of backscattered electron images with $\times 1000$ magnification was appropriate to efficiently identify uranium particles. Lower magnification (less than $\times 500$) made it difficult to detect smaller particles of approximately $1\ \mu\text{m}$ diameter. After identification, each particle was manipulated and transferred for subsequent isotope ratio analysis by SIMS. Consequently, the isotope ratios of individual uranium particles were successfully determined without any molecular ion interference. It was demonstrated that the proposed technique provides a powerful tool to measure individual particles not only for nuclear safeguards but also for environmental sciences.

Keywords : SEM-EDX, SIMS, Uranium particles, Nuclear safeguards, Backscattered electron

Introduction

Secondary ion mass spectrometry (SIMS) is a promising technique to measure isotope ratios of individual uranium particles in environmental samples taken at nuclear facilities,¹⁻³ similar to thermal ionization mass spectrometry.^{4,6} The isotope ratios provide valuable information on the sources of each particle, which are strongly related to nuclear activities in a nuclear facility. The International Atomic Energy Agency compares such isotope ratio data with values for nuclear materials used and declared by a facility. If there is an inconsistency between the obtained data and declared information, undeclared nuclear activities are suspected for the facility. This plays an important role in nuclear non-proliferation.

A drawback in isotope ratio analysis by SIMS is the occurrence of molecular ion interferences.^{7,8} During the

analysis of a uranium particle, elements such as lead (Pb) and tungsten (W) in neighboring particles may produce molecular ions and cause spectral interferences on the uranium mass region (e.g., $^{206}\text{Pb}^{12}\text{C}^{16}\text{O}^+$, $^{208}\text{Pb}^{12}\text{C}^{16}\text{O}^+$ and $^{186}\text{W}^{16}\text{O}_3^+$), resulting in inaccurate isotope ratio results. The use of a state-of-the-art SIMS instrument enables to overcome this problem to a considerable extent owing to a high mass-resolving power.⁸

As an alternative approach, the authors previously developed a manipulation technique for a uranium particle under a scanning electron microscope (SEM).⁷ This approach enabled individual uranium particles to be transferred onto another planchet using a micro-manipulator attached to SEM, thereby eliminating molecular ion interferences by elements in neighboring particles. In this technique, prior to the manipulation and isotope ratio analysis by SIMS, a small number of uranium particles that coexisted with a large number of other particles containing no uranium must be identified using SEM. The observation of backscattered electron (BSE) images is useful for the identification of a uranium particle because a particle containing an element with a relatively higher atomic number yields an image with relatively higher brightness.⁹ Therefore, uranium containing particles can be easily distinguished from other particles containing elements with relatively lower atomic numbers such as carbon, aluminum, silicon, and iron. However, it is considerably difficult to distinguish uranium containing

Open Access

*Reprint requests to Fumitaka Esaka

E-mail: esaka.fumitaka@jaea.go.jp

All MS Letters content is Open Access, meaning it is accessible online to everyone, without fee and authors' permission. All MS Letters content is published and distributed under the terms of the Creative Commons Attribution License (<http://creativecommons.org/licenses/by/3.0/>). Under this license, authors reserve the copyright for their content; however, they permit anyone to unrestrictedly use, distribute, and reproduce the content in any medium as far as the original authors and source are cited. For any reuse, redistribution, or reproduction of a work, users must clarify the license terms under which the work was produced.

particles from particles containing elements with relatively higher atomic numbers such as Pb and W. Therefore, X-ray analysis for identified particles is necessary to confirm the presence of uranium in each particle. This analysis is manually performed over the entire area for each planchet, which requires enormous efforts and limits the throughput of the analysis.

In the present study, an automated particle search function known as “Particle Finder” (developed for SEM instruments by JEOL Co. Ltd. Japan) was used to efficiently identify uranium particles. Here, the observation of BSE images and X-ray analysis with an energy dispersive X-ray (EDX) detector were performed automatically for particle identification. The performance was evaluated through an analysis of a real environmental sample. After the identification of uranium particles, each particle was transferred onto another planchet, and isotope ratio analysis was performed by SIMS.

Experimental

An environmental sample taken at a nuclear facility was used in this study. Particles in the sample were recovered onto a glassy carbon planchet (25 mm ϕ , Hitachi Chemical Co. Ltd., Japan) by a vacuum impaction technique.¹⁰ The planchet was then introduced into the main chamber of SEM. After the identification of individual uranium particles with SEM-EDX, each uranium particle was manipulated with a glass needle attached to a manipulator and transferred onto another glassy carbon planchet. Glass needles were fabricated from glass rods with a diameter of 1 mm using a micropipette puller (PC-10, Narishige Co. Ltd., Japan) and thinly coated with gold using a coater (SC-701AT, Sanyu Electron Co. Ltd., Japan).

A field emission scanning electron microscope (JSM-7800F, JEOL Co. Ltd., Japan) equipped with EDX (JED-2300, JEOL Co. Ltd., Japan) was used to identify uranium particles. An electron beam with an accelerating voltage of 20 keV was used to observe BSE images of the particles. The number of pixels of the BSE images was set at 512 \times 384. The magnification of the BSE images was set at \times 250, \times 500, \times 750, \times 1000, \times 1300, or \times 1600. Uranium particles were searched over a range of 1 cm \times 1 cm on the planchet. The acquisition time in EDX analysis for each identified particle was set at 10 s.

A secondary ion mass spectrometer (IMS-6f, Cameca, France) was used for measuring isotope ratios in individual uranium particles. In SIMS analysis, an O_2^+ focused beam of 15 keV with a current of 1–5 nA and raster size of 30 or 40 μ m was used for sputtering particles. Positive secondary ions emitted from a particle were accelerated through 5 keV. Transfer optics of 150 μ m and a field aperture of 1800 μ m were used. An energy slit was adjusted for a band pass of 50 eV. The mass resolution was set at 300.

Results and Discussion

Uranium particle identification

The relation among the magnification of BSE images, analysis time, and number and size of identified uranium particles was investigated to optimize analytical conditions for SEM-EDX analysis. In this study, uranium particles in the sample were identified by SEM-EDX with magnifications of \times 250, \times 500, \times 750, \times 1000, \times 1300, and \times 1600, and with increasing magnification, the analysis times increased, i.e., 6.4, 14.5, 31.5, 55.1, 92.8, and 137.1 h, respectively. The analysis times were strongly dependent on the number of uranium particles and other particles containing elements with relatively higher atomic numbers. The number of identified uranium particles increased with increasing magnification until \times 1300 and slightly reduced at \times 1600, as shown in Figure 1. At \times 1300 magnification, 298 uranium particles were identified, whereas at \times 250 magnification, only 62 uranium particles were detected. At \times 1000 magnification, 263 uranium particles were identified, which is 88% of the number of particles identified at \times 1300 magnification. In this case, the analysis time was reduced to 59% of that of the measurement at \times 1300 magnification. By considering the analysis time and the number of identified uranium particles, \times 1000 magnification appears to be appropriate for efficiently identifying uranium particles.

At \times 1000 magnification, 263 uranium particles and 156 particles containing no uranium were identified by the BSE images. The main elements in the particles containing no uranium were Pb, W, and zinc (Zn). From the BSE images, it was difficult to distinguish uranium particles from the other particles containing these elements. Therefore, X-ray analysis for each identified particle was essential to confirm the presence of uranium.

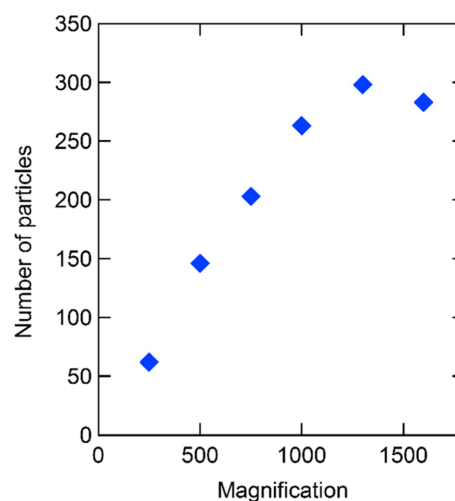


Figure 1. Number of uranium particles identified by SEM-EDX as a function of the magnification of BSE images.

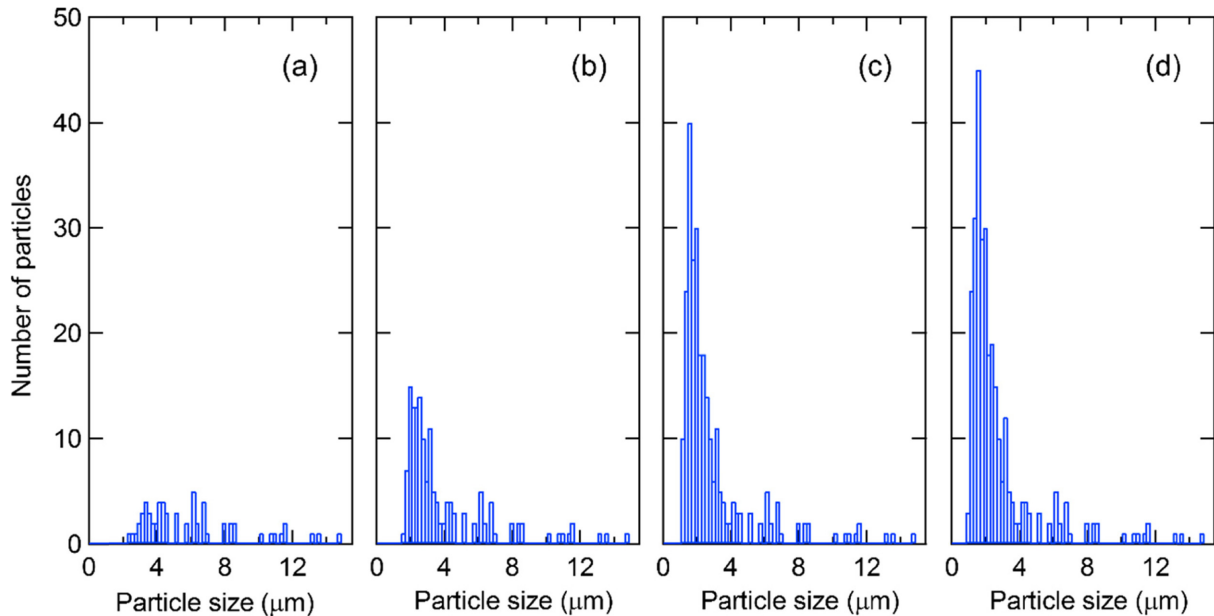


Figure 2. Number of uranium particles identified by SEM-EDX as a function of the particle size. The magnifications of BSE images were set at (a) $\times 250$, (b) $\times 500$, (c) $\times 1000$, and (d) $\times 1300$.

Figure 2 shows the number of identified uranium particles as a function of the particle size. At $\times 250$ magnification, no uranium particle with a diameter of less than $2 \mu\text{m}$ was identified. Conversely, at $\times 1000$ and $\times 1300$ magnification, a large number of uranium particles with less than $2 \mu\text{m}$ diameter was identified. Environmental samples taken at nuclear facilities usually contain uranium particles with a diameter of approximately $1 \mu\text{m}$. Therefore, $\times 1000$ magnification is necessary to identify uranium particles for such samples.

Figure 3 shows the BSE images and EDX spectra of the smallest and largest uranium particles identified in this study. Uranium exhibits a $\text{U M}\alpha, \beta$ X-ray peak at 3.16 keV in the EDX spectra. This peak is easily distinguishable from $\text{Pb M}\alpha$ (2.34 keV), $\text{W M}\alpha$ (1.77 keV) and $\text{Zn L}\alpha$ (1.01 keV) X-ray peaks. On the other hand, cadmium (Cd) exhibits a $\text{Cd L}\alpha$ X-ray peak at 3.13 keV , which overlaps with the $\text{U M}\alpha, \beta$ X-ray peak. It is difficult to distinguish a $\text{U M}\alpha, \beta$ X-ray peak from a $\text{Cd L}\alpha$ X-ray peak because of insufficient energy resolution in EDX analysis. In this case, a $\text{U L}\alpha$ X-ray peak at 13.6 keV should also be observed to confirm the presence of uranium because Cd exhibits no X-ray peak in such energy.

SIMS analysis

Each uranium particle identified at $\times 1000$ magnification in SEM-EDX analysis was manipulated and transferred onto another glassy carbon planchet for subsequent isotope ratio analysis by SIMS. Figure 4 shows the ^{234}U and ^{235}U atomic ratios obtained for 12 individual uranium particles. The ^{235}U atomic ratios were 0.8–6.4%. There is a good

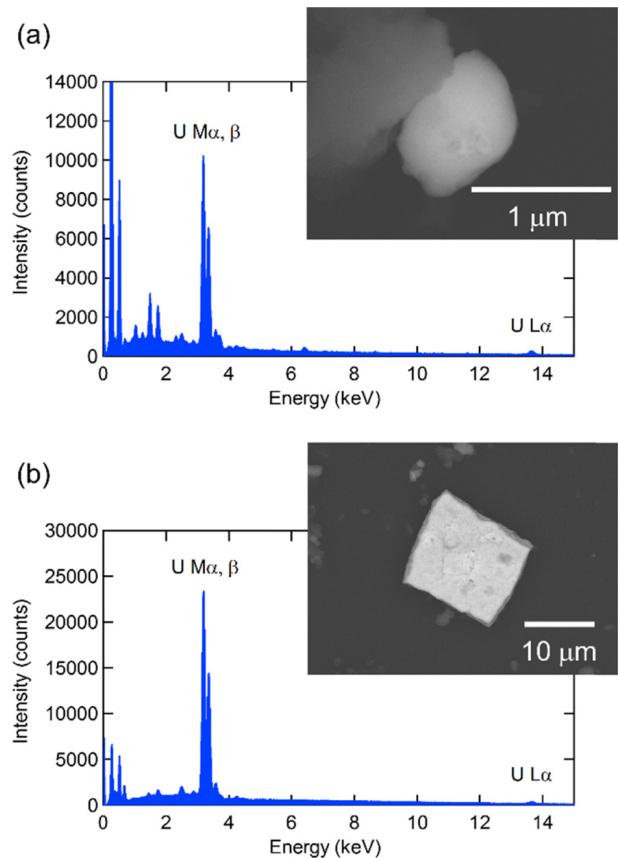


Figure 3. BSE images and EDX spectra of (a) the smallest and (b) the largest uranium particles identified by SEM-EDX. The acquisition time for each EDX spectrum was set at 200 s.

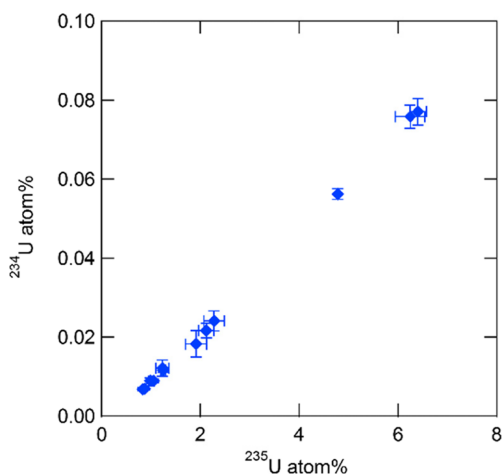


Figure 4. ^{234}U and ^{235}U atomic ratios of individual uranium particles in an environmental sample taken at a nuclear facility measured by SIMS.

correlation between the ^{234}U and ^{235}U atomic ratios, which indicates that there is no molecular ion interference owing to particle manipulation. The correlation between the ^{234}U and ^{235}U atomic ratios also indicates that low enriched uranium materials have been used at the facility from where the sample was taken.¹¹

Conclusions

In the present study, uranium particles were efficiently identified by SEM-EDX with automated particle search mode. The observation of the BSE images with $\times 1000$ magnification was appropriate to efficiently identify particles with a diameter of approximately $1\ \mu\text{m}$. After the identification of uranium particles, the uranium atomic ratios of individual particles were successfully determined with SIMS without any molecular ion interference. The proposed technique based on the observation of the BSE images is especially useful for analyzing particles

containing elements with relatively higher atomic numbers. Therefore, this technique would be a powerful tool for analyzing not only uranium but also heavy metal elements in environmental samples.

Acknowledgments

This work was performed under the auspices of the Nuclear Regulation Authority, Japan. The authors would like to thank Mr. T. Onodera, and Mr. H. Matsuyama for sample preparation.

References

1. Simons, D. S.; Gillen, G.; Zeissler, C. J.; Fleming, R. H., McNitt, P. J. *Secondary Ion Mass Spectrometry XI*, John Wiley & Sons, New York, **1998**.
2. Tamborini, G.; Betti, M.; Forcina, V.; Hiernaut, T.; Giovannone, B.; Koch, L. *Spectrochim. Acta B* **1998**, *53*, 1289.
3. Hedberg, P. M. L.; Peres, P.; Cliff, J. B.; Rabemananjara, F.; Littmann, S.; Thiele, H.; Vincent, C.; Albert, N. *J. Anal. At. Spectrom.* **2011**, *26*, 406.
4. Lee, C. G.; Iguchi, K.; Inagawa, J.; Suzuki, D.; Esaka, F.; Magara, M.; Sakurai, S.; Watanabe, K.; Usuda, S. *J. Radioanal. Nucl. Chem.* **2007**, *272*, 299.
5. Park, S.; Park, J. -H.; Lee, M. H.; Song, K. *Mass Spectrom. Lett.* **2011**, *2*, 57.
6. Park, J. -H.; Park, S.; Song, K. *Mass Spectrom. Lett.* **2013**, *4*, 51.
7. Esaka, F.; Esaka, K. T.; Lee, C. G.; Magara, M.; Sakurai, S.; Usuda, S.; Watanabe, K. *Talanta* **2007**, *71*, 1011.
8. Ranebo, Y.; Hedberg, P. M. L.; Whitehouse, M. J.; Ingeneri, K.; Littmann, S. *J. Anal. At. Spectrom.* **2009**, *24*, 277.
9. Lloyd, G. E. *Mineral. Mag.* **1987**, *51*, 3.
10. Esaka, F.; Watanabe, K.; Fukuyama, H.; Onodera, T.; Esaka, K. T.; Magara, M.; Sakurai, S.; Usuda, S. *J. Nucl. Sci. Technol.* **2004**, *41*, 1027.
11. Donohue, D. L.; *J. Alloys Compd.* **1998**, *271-273*, 11.