



# Assessing the Carrying Capacity of Wild Boars in the Bukhansan National Park using MaxEnt and HexSim Models

Tae Geun Kim\*<sup>ORCID</sup>

National Park Research Institute, Korea National Park Service, Wonju, Korea

## ABSTRACT

Understanding the carrying capacity of a habitat is crucial for effectively managing populations of wild boars (*Sus scrofa*), which are designated as harmful wild animal species in national parks. Carrying capacity refers to the maximum population size supported by a park's environmental conditions. This study aimed to estimate the appropriate wild boar population size by integrating population characteristics and habitat suitability for wild boars in the Bukhansan National Park using the HexSim program. Population characteristics included age, survival, reproduction, and movement. Habitat suitability, which reflects prospecting and resource acquisition, was determined using the Maximum Entropy model. This study found that the optimal population size for wild boar ranged from 217 to 254 individuals. The population size varied depending on the amount of resources available within the home range, indicating fewer individuals in a larger home range. The estimated wild boar population size was 217 individuals for the minimum amount of resources (50% minimum convex polygon [MCP] home range), 225 individuals for the average amount of resources (95% MCP home range), and 254 individuals for the maximum amount of resources (100% MCP home range). The results of one-way analysis of variance revealed a significant difference in wild boar population size based on the amount of resources within the home range. These findings provide a basis for the development and implementation of effective management strategies for wild boar populations.

**Keywords:** Bukhansan National Park, HexSim, MaxEnt, Population size, Wild boar populations

## Introduction

Wild boar (*Sus scrofa* Linnaeus 1958) is one of the most widely distributed and anthropologically introduced large mammal species in the world, including Asia and Europe (Ballari *et al.*, 2015; Markov *et al.*, 2022; Snow *et*

*al.*, 2017). It has been recently recorded from Jeju Island, where it was considered an extinct species (Han *et al.*, 2011; Oh *et al.*, 2007), and has been observed throughout the Korean peninsula (Cho *et al.*, 2009).

Recent trends in habitat loss, agricultural land expansion, and vigorous reproduction have led to sharp increases in wild boar populations (National Institute of Biological Resources [NIBR], 2017; 2021). Such increases have resulted in conflicts with humans, due to damage to agricultural land (Bobek *et al.*, 2017; Kim *et al.*, 2014; Lee *et al.*, 2018a; Schley *et al.*, 2008), vehicle collisions (Kim *et al.*, 2021; Pagany, 2020), and concerns regarding the possibility of transmission of diseases, such as African

Received June 12, 2023; Revised July 11, 2023;  
Accepted July 12, 2023

\*Corresponding author: Tae Geun Kim  
e-mail [spacek@hanmail.net](mailto:spacek@hanmail.net)  
 <https://orcid.org/0009-0000-4549-9907>



This is an Open Access article distributed under the terms of the Creative Commons Attribution Non-Commercial License (<http://creativecommons.org/licenses/by-nc/4.0>), which permits unrestricted non-commercial use, distribution, and reproduction in any medium, provided the original work is properly cited.

swine fever (ASF) and foot-and-mouth disease (Cadenas-Fernández *et al.*, 2022; Guberti *et al.*, 2019). As they are more frequently found in urban areas, damage to humans has increased and has become a social issue (Dudzińska & Dawidowicz, 2021; NIBR, 2021).

Human-wild boar conflict has been continuously increasing in recent years, and significant efforts are being made to address this issue (Lombardini *et al.*, 2017; Pandey *et al.*, 2016). In Korea, in particular, the situation has reached a critical point at which conflict between humans and wild boars has become a significant social problem owing to crop damage, incidents in urban areas, and even human casualties (Lee *et al.*, 2018b). According to the Ministry of Environment (MOE, 2023a), damage to crops by harmful wild animals reached more than Korean Won (KRW) 10 billion per year from 2014 to 2021, and the damage to crops by wild boars reached 5 billion KRW per year. Between 2019 and 2021, 43,660 wild mammals and birds were killed, of which 573 were wild boar. In Korea, wild boar populations were comprised of 3,141 individuals with ASF by July 23, 2023 (MOE, 2023b).

In Korea, it is impossible to naturally control wild boar populations because of predator extinction (NIBR, 2017). Therefore, it is necessary to actively manage wild boars through hunting, reproduction control, and other methods to mitigate the damages (Croft *et al.*, 2020). To this end, there have been diverse studies on the home range estimation of wild boars (Choi *et al.*, 2006; Kim *et al.*, 2017), its habitat density (Ferretti *et al.*, 2021; Pihl *et al.*, 2011), the status of its distribution (Acevedo *et al.*, 2014), its population dynamics (Ditchkoff *et al.*, 2012; Náhlik & Sándor, 2003), and feeding analytics (Lee & Lee, 2019). However, studies estimating the carrying capacity of wild boar populations, which indicates the maximum individuals that can survive in specific habitats, are largely lacking (Bruinderink & Hazebroek, 1995).

Recent developments in communication and information technology have led to the use of remote sensing data and habitat suitability models, which provide useful information for wildlife conservation (Heinrichs *et al.*, 2017; Squires *et al.*, 2013). Methods for estimating the potential carrying capacity of wild animal populations have shown remarkable development by integrating the characteristics of habitat environments (e.g., availability of food resources, competition with other species, interactions with predators, and diseases in natural ecosystems) with complex population characteristics (e.g., survival, reproduction, and movement). Carrying capacity refers to the maximum number of individuals that specific habitats can support when the growth rate of an individual becomes zero (McGinley, 2013).

HexSim (<https://www.hexsim.net/>) is a robust software for spatially explicit and individual-based modeling. It facilitates the modeling of various species and ecosystems

by simulating population dynamics, interactions, and responses to environmental changes. HexSim provides valuable insights into complex ecological processes by realistically representing ecological interactions. The flexibility of the program in model development and simulation enables researchers to make adjustments and explore different scenarios, aiding in the prediction of environmental impacts and informing decision-making in resource management (Schumaker & Brookes, 2018). HexSim is widely recognized and extensively utilized in the fields of ecology, resource management, and conservation biology because of its ability to accurately estimate population sizes by incorporating species characteristics and habitat conditions (Heinrichs *et al.*, 2017; Huber *et al.*, 2014; Schumaker & Brookes, 2018; Spencer *et al.*, 2011).

Maximum Entropy model (MaxEnt) is a machine learning approach among the ecological niche models based on maximum entropy. It uses species occurrence data to predict geographic distribution and is well known for its high accuracy (Baldwin, 2009; Phillips & Dudík, 2008; Phillips *et al.*, 2006). This model is widely employed in various fields as a presence-only method for species distribution modeling, and its utility has been extensively validated (Bosch *et al.*, 2014; Kim *et al.*, 2015; Lee *et al.*, 2022; Peterson *et al.*, 2007; Phillips & Dudík, 2008). Although MaxEnt and presence-only models have been criticized for their imprecise approximations (Brotons *et al.*, 2004; Yackulic *et al.*, 2013), MaxEnt stands out as the most unbiased model when working with presence-only data (Elith *et al.*, 2011). Moreover, it provides robust inference even with limited information (Ward *et al.*, 2009). Despite certain limitations such as spatial resolution dependence and sampling bias (Alsamadisi *et al.*, 2020; Kramer-Schadt *et al.*, 2013), MaxEnt modeling offers various benefits, including ease of use, compatibility with irregular samples, and tolerance for minor sampling errors (Kramer-Schadt *et al.*, 2013; Morales *et al.*, 2017). Therefore, we used MaxEnt to determine the habitat suitability of wild boars within the Bukhansan National Park using data on their occurrences and environmental variables (Phillips, 2017).

National parks prohibit the capture and hunting of wild boars under the Natural Parks Act. To mitigate crop damage and human-wildlife conflicts, national parks manage wild boar populations by installing fences and relocating captured boars. Estimating the optimal population size and predicting the geographical distribution within a park are crucial measures for effective population management.

This study aimed to assess the carrying capacity of wild boar populations in Bukhansan National Park by integrating population characteristics (survival, reproduction, and movement) and habitat suitability using HexSim. Habitat suitability was derived using the MaxEnt model to simu-

late dispersal, prospecting, and resource acquisition. To achieve this, we estimated the population size of wild boars based on the resource availability within their home ranges and compared the differences in population size.

## Materials and Methods

### Research methods

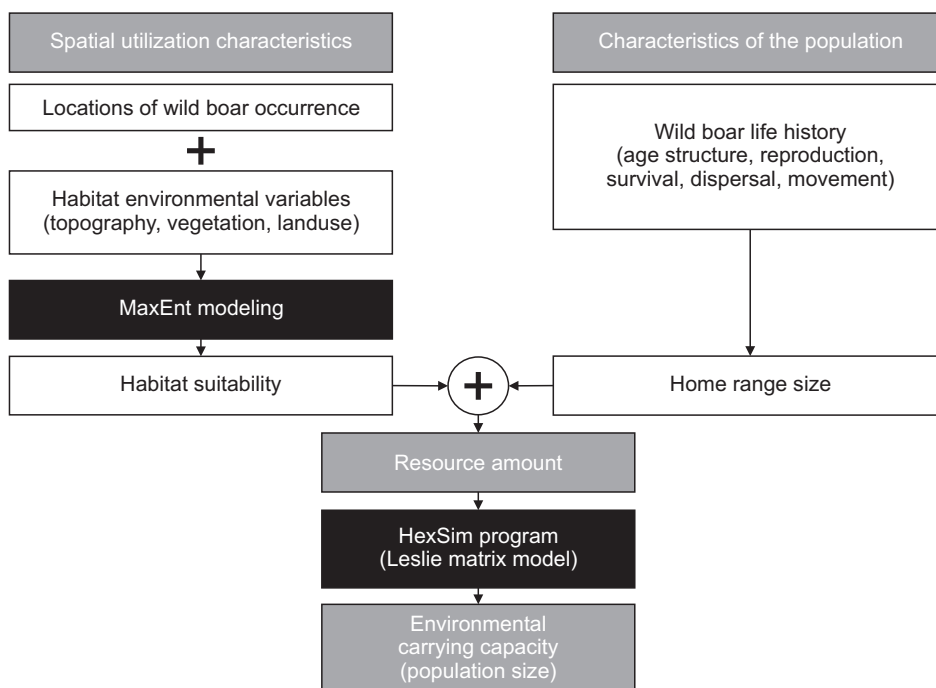
The environmental carrying capacity of wild boars in Bukhansan National Park was evaluated by integrating their spatial utilization and population characteristics. The spatial utilization characteristics of wild boars were determined by applying location data and habitat environmental variables to the MaxEnt model, resulting in habitat suitability scores. Population characteristics included age groups, reproductive and survival rates, dispersal, and movement. The appropriate population size of wild boars was estimated and compared based on the amount of resources within the wild boar home range (Fig. 1). The amount of resources was determined by summing the habitat suitability scores within the home range.

### Study area

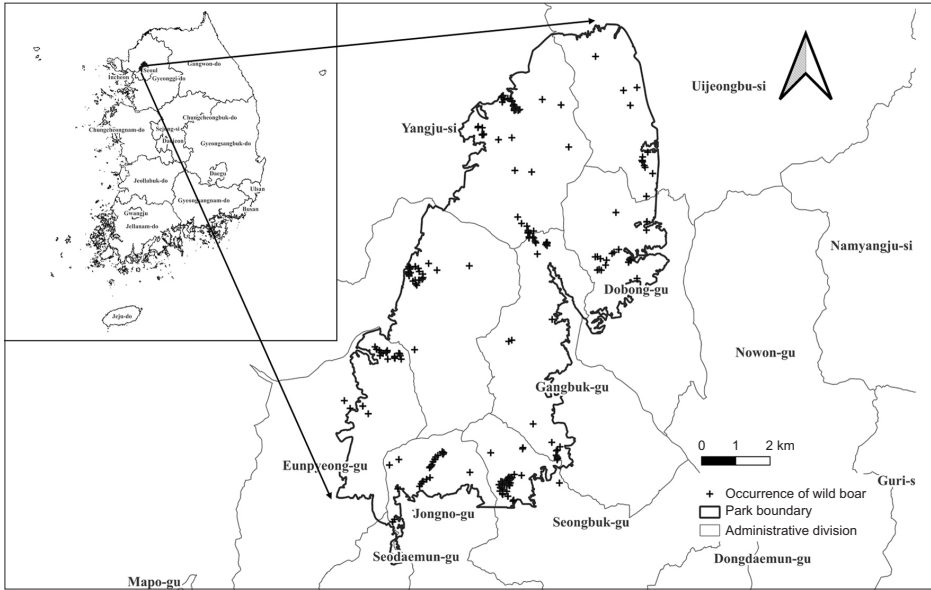
Bukhansan National Park is located in a city and was designated as the 15th National Park in Korea in 1983. It is distributed across 126.9347°–127.0511° East and 37.4314–37.7317° North. The park is 76.922 km<sup>2</sup> in area, with the tallest peak at 836 m above sea level (Fig. 2). An average annual temperature of 18.0°C was recorded during a decade (2010–2019) and the annual average precipitation is 1,291.7 mm. The vegetation in Bukhansan

National Park is dominated by *Quercus mongolica*–*Pinus densiflora* communities (50.33%), followed by *Q. mongolica* communities (20.84%) and mixed forests (13.24%). *Q. mongolica* communities (1,665.19 ha) are regarded as climax vegetation and are dominant above 250 m above sea level. In addition, 2.23% proportion of national parks comprise plantations and agricultural fields adjacent to urban areas (Oh *et al.*, 2008). The park is popular among hikers and Seoul residents, and has approximately six million annual visitors (6.08 million in 2016). The park and its surrounding areas are heavily utilized, including residential areas adjacent to military camps and Buddhist temples located within the park boundaries (National Park Research Institute [NPRI], 2019).

Wild boar has recently spread to the Seoul metropolitan area in Korea, which is home to approximately 25 million people (Lee *et al.*, 2022). Until the early 2000s, wild boar sightings in Seoul were rare, and the species required protection (Seo & Park, 2000). However, wild boars were first spotted in Bukhansan National Park in 2004 (Korea National Park Service, 2004). Based on a survey of wild boars conducted in Mount Bukhansan National Park in 2019, the monthly average number of individuals decreased by 30% from 91.9 individuals in 2017 to 63.6 individuals in 2018. Additionally, the average density also decreased from 1.9 individuals per km<sup>2</sup> to 1.4 individuals per km<sup>2</sup> (NPRI, 2019). However, anthropogenic food resources, such as food waste from houses near Bukhansan National Park and temples within the park, have attracted wild boars to urban areas, causing crop damage and friction with local governments due to related civil com-



**Fig. 1.** A schematic of the process of evaluating the environmental carrying capacity of wild boar. MaxEnt, Maximum Entropy model.



**Fig. 2.** Distribution of wild boar location data surveyed in Bukhansan National Park.

**Table 1.** Mean litter size, proportion of females participating in reproduction, yearly survival rates, and fertilities under different environmental conditions

Stage class		Mean litter size	Proportion reproduction	Survival rates	Fertility
Poor	Juvenile	3.5	0.3	0.25	0.13
	Yearling	4.5	0.8	0.31	0.56
	Adult	6.3	0.9	0.58	1.64
Intermediate	Juvenile	4	0.4	0.33	0.26
	Yearling	5.5	0.85	0.4	0.94
	Adult	6.5	0.9	0.66	1.93
Good	Juvenile	4.5	0.5	0.52	0.59
	Yearling	6.5	0.5	0.6	1.76
	Adult	6.8	0.5	0.71	2.29

plaints (NPRI, 2019).

**Data**

To estimate wild boar population size using the Hex-Sim program, we used demographic data (e.g., survival and reproduction rates) from an existing study (Bieber & Ruf, 2005). Table 1 shows the mean litter size, proportion of females participating in reproduction, annual survival rate, and fertility under different environmental conditions (poor, intermediate, and good). In this study, we used the average values of these rates.

The locations of the wild boars used to assess habitat suitability were obtained from a study conducted in 2017 as part of the Bukhansan National Park Wild Boar Management Project (NPRI, 2017). Global positioning system (GPS) location data were collected using unmanned sen-

sor cameras and tracking surveys. Twenty-nine unmanned sensor cameras were distributed across 22 locations where boar signs, including wallows, rubbing trees, and trails, were identified. Following the wildlife survey protocol of the NPRI (2017), biologists also identified additional boar signs (mostly feces, rubs, wallows, and footprints) and confirmed the locations for an additional 297 sign sites without unmanned sensor cameras. A total of 319 GPS location data points (22 camera trapping points and 297 field sign points) from wild boars were used in the Max-Ent model (Fig. 2).

Habitat environmental variables were prepared in a GIS format to calculate habitat suitability using the Max-Ent model (Table 2). We generated a 30 m×30 m digital elevation model (DEM) using GIS and the triangulated irregular network technique. The DEM was created using

a digital topographic map downloaded from the National Spatial Data Infrastructure Map Service (<https://www.nsdi.go.kr/lxmap/index.do>). Slope and aspect data were derived from the DEM. To assess accessibility from residential areas and farmland, we generated a map indicating the distances from these areas using Euclidean distance and a digital terrain map. Data on forest type and tree age were generated using a digital forest-type map from the National Forestry Information Service (<https://map.forest.go.kr/forest/>). The digital forest-type map is a representative thematic map of forest distribution in South Korea, providing information on various attributes, such as forest type, tree age class, tree species, canopy density, stand volume, and elevation (Park *et al.*, 2019). The age of trees was classified into six grades based on 10-year intervals using the average age of the forest stands. Forest types were classified into nine categories: coniferous, deciduous, mixed coniferous-deciduous, *Pinus densiflora*, *Pinus koraiensis*, *Pinus rigida*, *Larix leptolepis*, poplar, and oak forests. The GIS map data were generated using ArcGIS 10.7 software (ESRI, 2011).

**Habitat suitability**

Habitat suitability was used to evaluate the spatial utilization characteristics of wild boar populations. To calculate the habitat suitability of wild boars within Bukhansan National Park, we used MaxEnt version 3.4.4 (Phillips, 2017; Phillips *et al.*, 2006) using 319 wild boar occurrences (Fig. 2) and eight environmental variables (Table 2).

Environmental variables were divided into natural and disturbed environments, and the former were further classified into topographic and forest environments. Natural environment factors included altitude above sea level (DEM), mountain slopes (slope), and slope direction (aspect), which are related to movement and hiding places. Forest environment factors included forest types and age classes of trees, which are related to feeding and hiding

places. Disturbance factors include the distance from residential areas and farmlands, which are related to feeding and damage to humans (Morelle & Lejeune, 2015; NPRI, 2018; Rho, 2015; Seo & Park, 2000). We generated a random sample of 10,000 background points from environmental data (Elith *et al.*, 2011; Phillips & Dudik, 2008), which were required by the MaxEnt method to mimic the absences or pseudo-absences of the species.

To prevent overfitting, which occurs when a model has high predictive accuracy on the training data but low predictive accuracy on the new data, we split the 319 location data points of wild boar populations into training data (75%) and verification data (25%). We then ran the model ten times (Radosavljevic & Anderson, 2014).

Performance of the MaxEnt model was estimated by calculating the area under the curve (AUC) of the receiver operating characteristic (ROC) curve. This is the preferred technique for evaluating models based on presence-only data (Stockwell & Peters, 1999). The ROC curve is a graphical plot of the true-positive rate (TPR) and false-positive rates (FPR). The TPR is the percentage of positive cases that were correctly identified, whereas the FPR is the percentage of negative cases that were incorrectly identified. The AUC is a measure of the overall performance of the model. An AUC value of 1.0 indicates a perfect model, whereas an AUC value of 0.5 indicates a random model. An AUC value between 0.5 and 0.7 indicates an inappropriate model, whereas an AUC value of 0.7 indicates a good model. An AUC value of 0.9 indicates an ideal model (Franklin, 2010).

The importance of the environmental variables was assessed using relative contributions and permutation importance (Phillips, 2017). The relative contributions in the MaxEnt model represent the degree of influence of each environmental variable on the habitat suitability for a species. They provide insights into the variables that play a significant role in shaping suitable habitats for the spe-

**Table 2.** Environmental variables for MaxEnt modelling

Factor types		Factors	Use of factors	Data type	Mean±SD
Natural environment	Topographic environment	DEM	Movement/hiding places	Continuous	291.5±146.1 m
		Slope		Continuous	19.2±8.4°
		Aspect		Continuous	179.2±105.5°
	Forest environment	Tree age	Feeding/hiding places	Categorical	-
Forest type		Categorical		-	
Disturbed environment	Anthropogenic environment	Distances from residential areas	Damage to human	Continuous	1,249.3±780.6 m
		Distances from farmland	Damage to human/feeding	Continuous	1,319.2±987.1 m

DEM, digital elevation model; SD, standard deviation.

cies (Phillips, 2017). By understanding these relative contributions, we can prioritize the important environmental factors for habitat suitability. Permutation importance is used to measure the importance of individual features in a predictive model. It assesses the effect of shuffling the values of a feature on the performance of the model. If shuffling the values of a feature leads to a significant decrease in the model's accuracy or predictive power, this indicates that the feature is important for making accurate predictions. This method helps identify the most influential features in the model and understand their contributions to the overall performance (Phillips, 2017).

### Carrying capacity model for wild boar populations

We used the HexSim program to assess the carrying capacity of the wild boar population in the Bukhansan National Park. The analysis was conducted based on the basic model provided by HexSim (Schumaker, 2015). In the HexSim program, reproduction and survival rates according to age class were used as population characteristics of wild boar populations, and home range size, individual independence, and movement distance for feeding were used as spatial-use characteristics.

The age class of the wild boar population was divided into three stages: juveniles (less than one-year-old), yearlings (1–2 years old), and adults (>2 years old). We utilized the data provided by Bieber and Ruf (2005) for the variables related to fertility and survival rates in our study. (Table 1).

In particular, the food resources required by wild boars vary depending on habitat quality, and the amount of resources available is an important factor that determines the size of the population (Kim *et al.*, 2019; Singer *et al.*, 1981). Therefore, the optimal number of wild boars in Bukhansan National Park was calculated and compared based on the amount of resources available according to the home range size. Resource amounts were calculated by summing the suitability scores within home range sizes, which were determined through a MCP analysis conducted in a previous study in 2017 (NPRI, 2017). The MCP is an internationally accepted standard method for estimating a species' home range, particularly in circumstances in which presence-only data are the only type of spatially explicit data available (Burgman & Fox, 2003).

The population size was estimated by varying the amount of resources according to the MCP area. The minimum amount of resources was determined by summing the habitat suitability values extracted from the area corresponding to 50% of the MCP area. The average amount of resources was calculated by summing the suitability scores from the areas corresponding to 95% of the MCP. Finally, the maximum resource amount was determined by summing the suitability scores from 100% of the MCP area. These resource amounts were then used to estimate

the population size of wild boars.

To assess the statistical differences in the number of wild boar individuals based on resource availability, we conducted a one-way analysis of variance (ANOVA). ANOVA is a statistical test used to determine significant differences between the means of three or more groups (Bevans, 2020).

## Results

### Mode performance and potential distribution of wild boar

The prediction accuracy of the model that estimated the habitat suitability of wild boar populations in Bukhansan National Park was as follows: the AUC values derived from training and test data were 0.880 ( $\pm 0.011$ ) and 0.902 ( $\pm 0.020$ ), respectively. The habitat suitability for wild boars ranged from 0 to 96.4%. The area where the habitat suitability of wild boars was less than 25% was 23.6 km<sup>2</sup>, the area with habitat suitability of 25–50% was 25.8 km<sup>2</sup>, the area with habitat suitability of 50–75% was 26.2 km<sup>2</sup>, and the area with habitat suitability of 75% or higher was 1.3 km<sup>2</sup>. Red areas shown in Fig. 3 are highly likely to be inhabited by wild boar.

### Importance of environmental variables

The contributions of environmental variables were as follows: tree age (31.5%), forest type (20.7%), distance from residential areas (18.1%), distance from farmland (15.1%), digital elevation model (DEM) (7.3%), mountain slopes (4.1%), and slope direction (aspect) (3.2%). Table 3 provides estimates of the relative contributions and per-

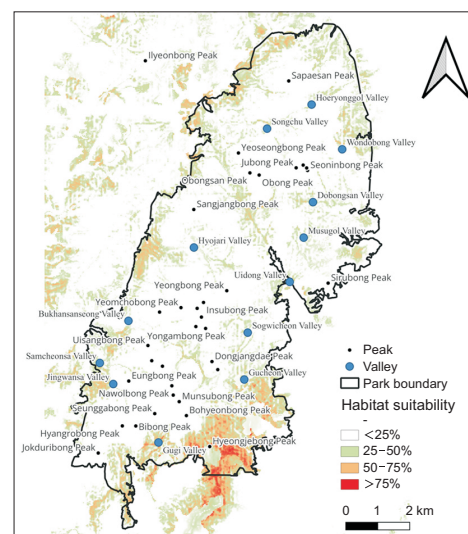


Fig. 3. Wild boar habitat suitability derived using MaxEnt model.

**Table 3.** The relative contribution and permutation importance of environmental variables to the MaxEnt model

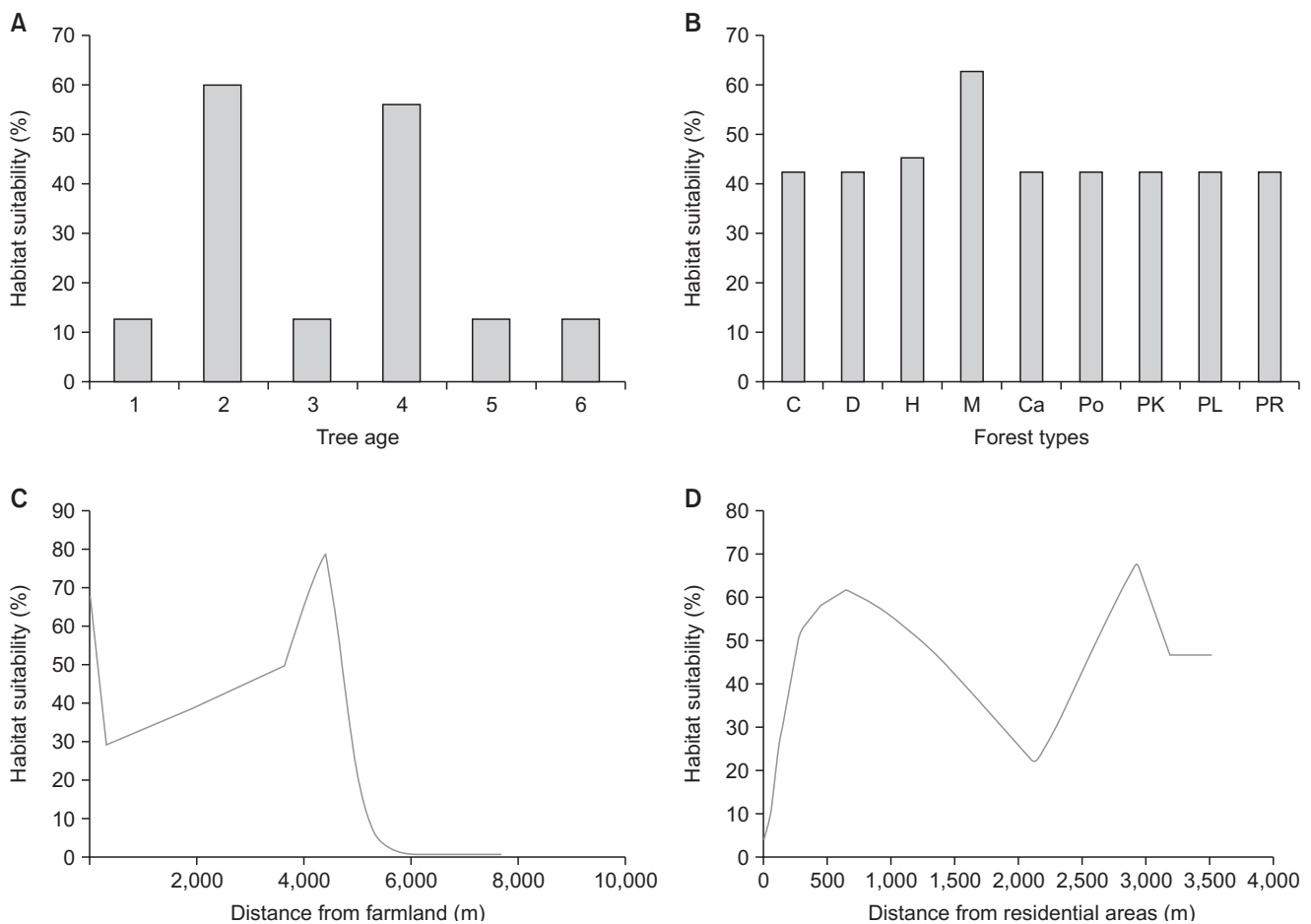
Variables	Percent contribution	Permutation importance
Tree age	31.5	2.3
Forest type	20.7	2.4
Distances from residential areas	18.1	39.2
Distances from farmland	15.2	23.7
DEM	7.3	20.4
Mountain slope	4.1	8.7
Slope direction (aspect)	3.2	3.2

DEM, digital elevation model.

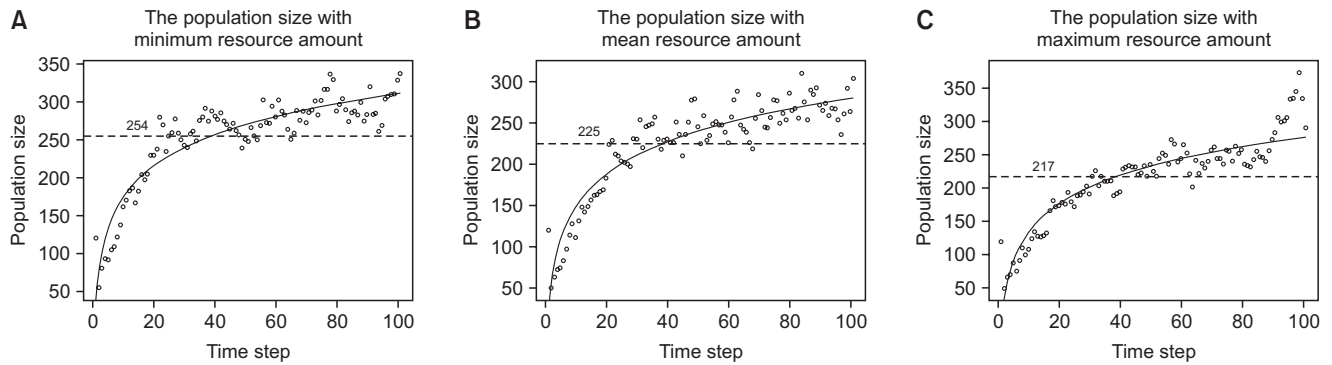
mutation importance of the environmental variables.

#### Response curves of wild boars to environmental variables

The responses of the species to changes in the selected variables are shown in Fig. 4. These plots reflect the dependence of prediction suitability on the selected variable. According to the response curve, areas where the tree age was between 10 and 20 years (age 2) or between 30 and 40 years (age 3) were found to be suitable habitats. Mixed forests were also found to be suitable habitat areas for wild boar. suitable areas were located at distances ranging from 277.9 to 1,226.1 m and 2,617 to 3,145 m from residential areas, respectively. suitable habitat areas were also identified at distances ranging from 5.6 to 156.0 m and 3,666.0 to 4,701.0 m from agricultural land. Additionally, areas with elevations between 119.2 and 317.2 m were identified as suitable habitats, whereas areas with slopes



**Fig. 4.** Response curves of the environmental variables. (A) Response of wild boar to tree age. age 1, 1 to 10 years old; age 2, 11 to 20 years old; age 3, 21 to 30 years old; age 4, 31 to 40 years old; age 5, 41 to 50 years old; age 6, 51 years old and above. (B) Response of Wild boar to forest types. C, coniferous forest; D, pinus densiflora forest, H, deciduous forest; M, mixed coniferous-deciduous forest; Ca, castanea crenata forest; Po, poplar forest; PK, pinus koraiensis forest; PL, Larix leptolepis forest; PR, pinus rigida forest. (C) Response of wild boar to distance from farmland (measured in meters). (D) Response of wild boar to distance from residential areas (measured in meters).



**Fig. 5.** The population size changes with the amount of resources. (A) Changes in population size based on minimum resource amount. (B) Changes in population size based on mean resource amount. (C) Changes in population size based on maximum resource amount.

ranging from 6.5 to 17.3° were also found to be suitable habitat areas. With respect to aspect, suitable habitat areas were identified with orientations ranging from 2.2 to 8.3° (north-facing), 299.3° to 360° (northwest-facing), and 19.5° to 74.7° (northeast-facing).

**Wild boar population size with the resource amount**

Based on the resource amount within the home range size (MCP 50%, 95%, and 100%) of wild boar populations, we ran each simulation 100 times to estimate the population size and found changes in population size (Fig. 5). The resource amount was considered a result of summing habitat suitability scores within the home range size; the minimum resource amount of the calculated MCP 50% was 53.67, the average resource amount of MCP 95% was 76.61, and the maximum resource amount of MCP 100% was 1,353.63. The wild boar population estimated by the minimum resource amount corresponding to the home range size of MCP 50% was 217 individuals, the population size using the average resource amount corresponding to the home range size of MCP 95% was 225 individuals, and the number using the maximum resource amount corresponding to the home range size of MCP 100% was estimated to be 254 individuals (Fig. 5).

**Analysis of variance based on resource amount within home range**

We conducted a one-way ANOVA to compare the impacts of the three different resource amounts on wild boar population size. The results revealed that there was a statistically significant difference in the population average between the minimum, average, and maximum resource amounts ( $F(2, 300) = 10.95, P = 2.56 \times 10^{-5}$ ). Tukey's honestly significant difference (HSD) multiple comparison tests showed that the average value of the population size between the minimum and average resource amounts was significantly different ( $P = 0.002, 95\%$  confidence

interval=[9.44, 49.40]); the average value of the population size between the minimum and maximum resource amounts was also significantly different ( $P < 0.001, 95\%$  confidence interval=[17.82, 57.78]). However, there was no statistically significant difference in average population size between the average and maximum resource amounts ( $P = 0.585$ ).

**Discussion**

The MaxEnt model yielded highly accurate predictions for the distribution of wild boars, with an AUC value over 0.85 and a standard deviation of 0.01. This indicates that the model effectively utilizes environmental variables to accurately predict the presence of wild boars (Franklin, 2010; Phillips & Dudík, 2008). This information can be considered useful for describing the spatial utilization characteristics that estimate the population size of wild boar. Although different environmental variables were used in this study, the predicted distribution was similar to the findings of previous studies on the distribution of wild boars (Lee *et al.*, 2022). Wild boars are mainly found in areas around the Gugi Valley, Gucheon Valley, and Hyeongjebong Peak, which are located in the southern area of Bukhansan National Park and are close to residential areas and farmlands (Lee *et al.*, 2022). Considering the high suitability of wild boars in residential and agricultural areas, it is important to take measures to prevent human-wildlife conflicts and mitigate the damage caused by wild boars to farmlands near forest boundaries, as these areas are more susceptible to farmland damage by wild boars (Lee *et al.*, 2018b).

Among the factors influencing the habitat suitability for wild boars, tree age, representing the age of forests, was found to be the most important variable, followed by forest type, distance from residential areas, distance from farmland, DEM, slope, and aspect. In this study, the influ-



ences of natural and anthropogenic factors were relatively high (Lee *et al.*, 2022). In particular, the age of trees and forest type were important variables influencing the suitability of wild boar habitat (Kim *et al.*, 2019; Seo & Park, 2000).

Wild boars prefer low altitudes in northeastern South Korea (Seo & Park, 2000; Lee *et al.*, 2022). However, wild boars used north-, northwest-, and northeast-facing slopes without any clear preference in Bukhansan National Park (Lee *et al.*, 2022). The importance of tree age and forest type, which are environmental variables selected as food resources, was higher than that of other variables. According to previous studies, this is likely due to the fact that areas for reproduction of wild boars are mostly found in forests with old trees (Fernández-Llario, 2004); broad-leaved forests and mixed forests with high forest density can provide high-calorie prey (e.g., insects) and safe shelter for juvenile wild boars (Meriggi & Sacchi, 2001).

Wild boars were mainly found in mixed forests (coniferous and broad-leaved forests) with trees aged 20 (10–20) and 40 years (30–40). Similarly, wild boars preferred lowlands with gentle slopes and low altitudes in forests with a mixture of old oak and pine trees (Kim *et al.*, 2019). This indicates that it is easy to access food resources in these areas. Wild boars often inhabit mature broad-leaved forests and are frequently found near oak forests with sufficient food sources, such as acorns and other nuts (Kim *et al.*, 2019; Sjarmidi *et al.*, 1992). Wild boars mainly consume corn and chestnuts in nature as food resources, as well as a small amount of food waste from human-inhabited areas. This result shows the relationship of the species occurrence with the distance from residential areas (Lee & Lee, 2019).

The population size of wild boars in Bukhansan National Park was estimated by considering both population characteristics and habitat suitability. The findings showed a statistically significant decrease in the number of individuals as resource availability within the home range increased (Fig. 5). This can be attributed to the expansion of preferred habitat environments, such as oak forests, which provide stable food resources such as acorns (Kim *et al.*, 2019). As a result, the size of home ranges for foraging by wild boars has increased (Singer *et al.*, 1981). Consequently, a reduced population density within a limited park area can lead to a decrease in the number of wild boars (Massei *et al.*, 1997). Additionally, competition among wild boars for food and space can contribute to a decrease in population size (Perlman, 2017).

This study linked population characteristics and habitat-use features using the HexSim program to evaluate the carrying capacity of wild boar populations in Bukhansan National Park. Population characteristics, such as survival, reproduction, and movement were considered in this study. Habitat use features were derived using the MaxEnt

model.

Among the factors influencing habitat suitability for wild boar populations, environmental variables related to food resources (tree age and forest type) were found to be relatively more important than other environmental variables. The analysis of the impact of resource availability on population size based on the home range size of wild boar populations revealed that there was a statistically significant difference in the population size in line with the resource amount. Through a multiple comparison test, we found a statistically significant difference between the population size estimated by the minimum resource amount and that estimated by the average and maximum resource amounts. However, there was no statistically significant difference between the population sizes estimated using the average and maximum resource amounts. Population size tended to decrease as the amount of resources required for wild boar populations increased. Based on the resource amount, the optimal wild boar population size in Bukhansan National Park was estimated to be between 217 and 254 individuals, and the appropriate size based on the average resource amount was estimated to be 225 individuals. This information can be useful for effective management of the species in the park.

### Conflict of Interest

The author declares that (s)he has no competing interests.

### Acknowledgments

This study was supported by the National Park Research Institute's Natural Resource Survey and Research on the Population Survey and Management of Harmful Wildlife in Urban National Parks (NPRI 2018-09).

### References

- Acevedo, P., Quirós-Fernández, F., Casal, J., and Vicente, J. (2014). Spatial distribution of wild boar population abundance: basic information for spatial epidemiology and wildlife management. *Ecological Indicators*, 36, 594–600. <https://doi.org/10.1016/j.ecolind.2013.09.019>
- Alsamadisi, A.G., Tran, L.T., and Papeş, M. (2020). Employing inferences across scales: integrating spatial data with different resolutions to enhance Maxent models. *Ecological Modelling*, 415, 108857. <https://doi.org/10.1016/j.ecolmodel.2019.108857>
- Baldwin, R.A. (2009). Use of maximum entropy modeling in wildlife research. *Entropy*, 11, 854–866. <https://doi.org/10.3390/e11040854>
- Ballari, S.A., Cuevas, M.F., Cirignoli, S., and Valenzuela, A.E.J. (2015). Invasive wild boar in Argentina: using protected areas as a research platform to determine distribution, impacts and management. *Biological Invasions*, 17, 1595–1602. <https://doi.org/10.1007/s10841-015-9841-1>

- doi.org/10.1007/s10530-014-0818-7
- Bevans, R. (2020). *ANOVA in R | a complete step-by-step guide with examples*. Retrieved Jun 22, 2023 from <https://www.scribbr.com/statistics/anova-in-r/>.
- Bieber, C., and Ruf, T. (2005). Population dynamics in wild boar *Sus scrofa*: ecology, elasticity of growth rate and implications for the management of pulsed resource consumers. *Journal of Applied Ecology*, 42, 1203-1213. <https://doi.org/10.1111/j.1365-2664.2005.01094.x>
- Bobek, B., Furtek, J., Bobek, J., Merta, D., and Wojciuch-Ploskonka, M. (2017). Spatio-temporal characteristics of crop damage caused by wild boar in north-eastern Poland. *Crop Protection*, 93, 106-112. <https://doi.org/10.1016/j.cropro.2016.11.030>
- Bosch, J., Mardones, F., Pérez, A., de la Torre, A., and Muñoz, M.J. (2014). A maximum entropy model for predicting wild boar distribution in Spain. *Spanish Journal of Agricultural Research*, 12, 984-999. <https://doi.org/10.5424/sjar/2014124-5717>
- Brotons, L., Thuiller, W., Araújo, M.B., and Hirzel, A.H. (2004). Presence-absence versus presence-only modelling methods for predicting bird habitat suitability. *Ecography*, 27, 437-448. <https://doi.org/10.1111/j.0906-7590.2004.03764.x>
- Bruinderink, G.W.T.A.G., and Hazebroek, E. (1995). Modelling carrying capacity for wild boar *Sus scrofa scrofa* in a forest/heathland ecosystem. *Wildlife Biology*, 1, 81-87. <https://doi.org/10.2981/wlb.1995.0013>
- Burgman, M.A., and Fox, J.C. (2003). Bias in species range estimates from minimum convex polygons: implications for conservation and options for improved planning. *Animal Conservation Forum*, 6, 19-28. <https://doi.org/10.1017/S1367943003003044>
- Cadenas-Fernández, E., Ito, S., Aguilar-Vega, C., Sánchez-Vizcaino, J.M., and Bosch, J. (2022). The role of the wild boar spreading African swine fever virus in Asia: another underestimated problem. *Frontiers in Veterinary Science*, 9, 844209. <https://doi.org/10.3389/fvets.2022.844209>
- Cho, I.C., Han, S.H., Fang, M., Lee, S.S., Ko, M.S., Lee, H., et al. (2009). The robust phylogeny of Korean wild boar (*Sus scrofa coreanus*) using partial D-loop sequence of mtDNA. *Molecules and Cells*, 28, 423-430. <https://doi.org/10.1007/s10059-009-0139-3>
- Choi, T.Y., Lee, Y.S., and Park, C.H. (2006). Home-range of wild boar, *Sus scrofa* living in the Jirisan National Park, Korea. *Journal of Ecology and Environment*, 29, 253-257.
- Croft, S., Franzetti, B., Gill, R., and Massei, G. (2020). Too many wild boar? Modelling fertility control and culling to reduce wild boar numbers in isolated populations. *PLoS One*, 15, e0238429. <https://doi.org/10.1371/journal.pone.0238429>
- Ditchkoff, S.S., Jolley, D.B., Sparklin, B.D., Hanson, L.B., Mitchell, M.S., and Grand, J.B. (2012). Reproduction in a population of wild pigs (*Sus scrofa*) subjected to lethal control. *Journal of Wildlife Management*, 76, 1235-1240. <https://doi.org/10.1002/jwmg.356>
- Dudzińska, M., and Dawidowicz, A. (2021). Detecting the severity of socio-spatial conflicts involving wild boars in the city using social media data. *Sensors*, 21, 8215. <https://doi.org/10.3390/s21248215>
- Elith, J., Phillips, S.J., Hastie, T., Dudík, M., Chee, Y.E., and Yates, C.J. (2011). A statistical explanation of MaxEnt for ecologists. *Diversity and Distributions*, 17, 43-57. <https://doi.org/10.1111/j.1472-4642.2010.00725.x>
- ESRI. (2011). *ArcGIS Desktop: Release 10*. Redlands, CA: Environmental Systems Research Institute.
- Fernández-Llario, P. (2004). Environmental correlates of nest site selection by wild boar *Sus scrofa*. *Acta Theriologica*, 49, 383-392. <https://doi.org/10.1007/BF03192536>
- Ferretti, F., Lazzeri, L., Mori, E., Cesaretti, G., Calosi, M., Burrini, L., et al. (2021). Habitat correlates of wild boar density and rooting along an environmental gradient. *Journal of Mammalogy*, 102, 1536-1547. <https://doi.org/10.1093/jmammal/gyab095>
- Franklin, J. (2010). *Mapping species Distributions: Spatial Inference and Prediction*. Cambridge University Press.
- Guberti, V., Khomenko, S., Masiulis, M., and Kerba, S. (2019). *African Swine Fever in Wild Boar Ecology and Biosecurity. FAO Animal Production and Health Manual No. 22*. Food and Agriculture Organization.
- Han, S.H., Oh, J.G., Cho, I.C., Ko, M.S., Kim T.W., Chang, M.H., et al. (2011). A molecular genetic analysis of the introduced wild boar species (*Sus scrofa coreanus*) on Mount Halla, Jeju Island, Korea. *Korean Journal of Environment and Ecology*, 25, 658-665.
- Heinrichs, J.A., Aldridge, C.L., O'Donnell, M.S., and Schumaker, N.H. (2017). Using dynamic population simulations to extend resource selection analyses and prioritize habitats for conservation. *Ecological Modelling*, 359, 449-459. <https://doi.org/10.1016/j.ecolmodel.2017.05.017>
- Huber, P.R., Greco, S.E., Schumaker, N.H., and Hobbs, J. (2014). A priori assessment of reintroduction strategies for a native ungulate: using HexSim to guide release site selection. *Landscape Ecology*, 29, 689-701. <https://doi.org/10.1007/s10980-014-0006-2>
- Kim, H.R., Kim, T.G., Hong, G.P., Kim, J.M., and Kim, E.K. (2017). Home range analysis of wild boars (*Sus scrofa*) in Heuimang-bong (peak) of Hallyeohaesang National Park. *Journal of National Park Research*, 8, 133-137.
- Kim, M., Park, H., and Lee, S. (2021). Analysis of roadkill on the Korean expressways from 2004 to 2019. *International Journal of Environmental Research and Public Health*, 18, 10252. <https://doi.org/10.3390/ijerph181910252>
- Kim, S.O., Kwon, K.I., Kim, T.S., Ko, H.S., and Jang, G.S. (2014). An analysis on aspects of farm lands damaged by the wild boar (*Sus scrofa*) in Gyeongnam province, Korea. *Journal of the Korean Society of Environmental Restoration Technology*, 17, 17-27. <https://doi.org/10.13087/kosert.2014.17.6.17>
- Kim, T.G., Cho, Y., and Oh, J.G. (2015). Prediction model of pine forests' distribution change according to climate change. *Korean Journal of Ecology and Environment*, 48, 229-237. <https://doi.org/10.11614/KSL.2015.48.4.229>
- Kim, Y., Cho, S., and Choung, Y. (2019). Habitat preference of wild boar (*Sus scrofa*) for feeding in cool-temperate forests. *Journal of Ecology and Environment*, 43, 30. <https://doi.org/10.1186/s41610-019-0126-3>
- Korea National Park Service (KNPS). (2004). *Natural Resources Monitoring in Mt. Bukhan National Park: 3rd Year*. Korea National Park Service.
- Kramer-Schadt, S., Niedballa, J., Pilgrim, J.D., Schröder, B., Lin-

- denborn, J., Reinfelder, V., et al. (2013). The importance of correcting for sampling bias in MaxEnt species distribution models. *Diversity and Distributions*, 19, 1366-1379. <https://doi.org/10.1111/ddi.12096>
- Lee, O., Schlichting, P.E., and Jo, Y.S. (2022). Habitat model for wild boar (*Sus scrofa*) in Bukhansan National Park, Seoul. *Journal of Urban Ecology*, 8, juac027. <https://doi.org/10.1093/jue/juac027>
- Lee, S.M., and Lee, E.J. (2019). Diet of the wild boar (*Sus scrofa*): implications for management in forest-agricultural and urban environments in South Korea. *PeerJ*, 7, e7835. <https://doi.org/10.7717/peerj.7835>
- Lee, S.M., Lee, E.J., Park, H.B., and Seo, C.W. (2018a). Factors affecting crop damage by the wild boar (*Sus scrofa*): a case study in Geochang county, Gyeongnam province, Korea. *Korean Journal of Environment and Ecology*, 32, 140-146. <https://doi.org/10.13047/KJEE.2018.32.2.140>
- Lee, W.S., Kim, S.O., Kim, Y., Kim, J.H., and Jang, G.S. (2018b). Maximum entropy modeling of farmland damage caused by the wild boar (*Sus scrofa*). *Applied Ecology and Environmental Research*, 16, 1101-1117. [https://doi.org/10.15666/aeer/1602\\_11011117](https://doi.org/10.15666/aeer/1602_11011117)
- Lombardini, M., Meriggi, A., and Fozzi, A. (2017). Factors influencing wild boar damage to agricultural crops in Sardinia (Italy). *Current Zoology*, 63, 507-514. <https://doi.org/10.1093/cz/zow099>
- Markov, N., Economov, A., Hjeljord, O., Rolandsen, C.M., Bergqvist, G., Danilov, P., et al. (2022). The wild boar *Sus scrofa* in northern Eurasia: a review of range expansion history, current distribution, factors affecting the northern distributional limit, and management strategies. *Mammal Review*, 52, 519-537. <https://doi.org/10.1111/mam.12301>
- Massei, G., Genov, P.V., Staines, B.W., and Gorman, M.L. (1997). Factors influencing home range and activity of wild boar (*Sus scrofa*) in a Mediterranean coastal area. *Journal of Zoology*, 242, 411-423. <https://doi.org/10.1111/j.1469-7998.1997.tb03845.x>
- McGinley, M. (2013). *Carrying capacity*. Retrieved Jul 24, 2023 from [http://editors.eol.org/eoearth/wiki/carrying\\_capacity](http://editors.eol.org/eoearth/wiki/carrying_capacity).
- Meriggi, A., and Sacchi, O. (2001). Habitat requirements of wild boars in the northern Apennines (N Italy): a multi-level approach. *Italian Journal of Zoology*, 68, 47-55. <https://doi.org/10.1080/11250000109356382>
- Ministry of Environment (MOE). (2023a). *Yearly report on damages caused by harmful wildlife*. Retrieved Jul 24, 2023 from <https://www.me.go.kr/home/file/readFile.do?fileId=224882&fileSeq=2>.
- Ministry of Environment (MOE). (2023b). *Current Status of African swine fever (ASF) outbreak in domestic wild boar (as of July 3rd, 23.7.3.)*. Retrieved Jul 24, 2023 from <https://me.go.kr/home/file/readFile.do?fileId=230124&fileSeq=1>.
- Morales, N.S., Fernández, I.C., and Baca-González, V. (2017). MaxEnt's parameter configuration and small samples: are we paying attention to recommendations? A systematic review. *PeerJ*, 5, e3093. <https://doi.org/10.7717/peerj.3093>
- Morelle, K., and Lejeune, P. (2015). Seasonal variations of wild boar *Sus scrofa* distribution in agricultural landscapes: a species distribution modelling approach. *European Journal of Wildlife Research*, 61, 45-56. <https://doi.org/10.1007/s10344-014-0872-6>
- National Institute of Biological Resources (NIBR). (2017). *Wildlife Survey*. National Institute of Biological Resources.
- National Institute of Biological Resources (NIBR). (2021). *Wildlife Survey*. National Institute of Biological Resources.
- National Park Research Institute (NPRI). (2017). *Research on Management Strategies for Wild Boar in Bukhansan National Park*. National Park Research Institute.
- National Park Research Institute (NPRI). (2018). *Research on the Population Survey and Management of Harmful Wildlife in Urban National Parks*. National Park Research Institute.
- National Park Research Institute (NPRI). (2019). *Research on Habitat Assessment of Wild Boar in Urban National Parks: Year 2*. National Park Research Institute.
- Náhlik, A., and Sándor, G. (2003). Birth rate and offspring survival in a free-ranging wild boar *Sus scrofa* population. *Wildlife Biology*, 9, 37-42. <https://doi.org/10.2981/wlb.2003.062>
- Oh, H.S., Chang, M.H., and Kim, B.S. (2007). Current stains of mammals in Hallasan National Park. *Korean Journal of Environment and Ecology*, 21, 235-242.
- Oh, K.K., Kim, D.G., and Kim, C.E. (2008). Distribution of actual vegetation and management of Bukhansan National Park. *Korean Journal of Environment and Ecology*, 22, 83-97.
- Pagany, R. (2020). Wildlife-vehicle collisions - influencing factors, data collection and research methods. *Biological Conservation*, 251, 108758. <https://doi.org/10.1016/j.biocon.2020.108758>
- Pandey, P., Shaner, P.J.L., and Sharma, H.P. (2016). The wild boar as a driver of human-wildlife conflict in the protected park lands of Nepal. *European Journal of Wildlife Research*, 62, 103-108. <https://doi.org/10.1007/s10344-015-0978-5>
- Park, J.M., Do, M.R., Sim, W.D., and Lee, J.S. (2019). A study on the improvement of guideline in digital forest type map. *Journal of the Korean Association of Geographic Information Studies*, 22, 168-182. <https://doi.org/10.11108/kagis.2019.22.1.168>
- Perlman, K.R. (2017). *Using a two-species individual-based model to examine the population responses of northern Spotted Owls to experimental removals of Bared Owls in the Pacific Northwest*. (Master's thesis). Oregon State University, USA.
- Peterson, T.A., Papeş, M., and Eaton, M. (2007). Transferability and model evaluation in ecological niche modeling: a comparison of GARP and Maxent. *Ecography*, 30, 550-560. <https://doi.org/10.1111/j.0906-7590.2007.05102.x>
- Phillips, S.J. (2017). *A brief tutorial on Maxent*. Retrieved July 7, 2023 from [http://biodiversityinformatics.amnh.org/open\\_source/maxent/](http://biodiversityinformatics.amnh.org/open_source/maxent/).
- Phillips, S.J., and Dudík, M. (2008). Modeling of species distributions with Maxent: new extensions and a comprehensive evaluation. *Ecography*, 31, 161-175. <https://doi.org/10.1111/j.0906-7590.2008.5203.x>
- Phillips, S.J., Anderson, R.P., and Schapire, R.E. (2006). Maximum entropy modeling of species geographic distributions. *Ecological Modelling*, 190, 231-259. <https://doi.org/10.1016/j.ecolmodel.2005.03.026>
- Plhal, R., Kamler, J., Homolka, M., and Adamec, Z. (2011). An assessment of the applicability of photo trapping to estimate wild boar population density in a forest environment. *Folia*

- Zoologica*, 60, 237-246. <https://doi.org/10.25225/fozo.v60.i3.a8.2011>
- Radosavljevic, A., and Anderson, R.P. (2014). Making better MAXENT models of species distributions: complexity, overfitting and evaluation. *Journal of Biogeography*, 41, 629-643. <https://doi.org/10.1111/jbi.12227>
- Rho, P. (2015). Using habitat suitability model for the wild boar (*Sus scrofa* Linnaeus) to select wildlife passage sites in extensively disturbed temperate forests. *Journal of Ecology and Environment*, 38, 163-173. <https://doi.org/10.5141/eoenv.2015.018>
- Schley, L., Dufrière, M., Krier, A., and Frantz, A.C. (2008). Patterns of crop damage by wild boar (*Sus scrofa*) in Luxembourg over a 10-year period. *European Journal of Wildlife Research*, 54, 589-599. <https://doi.org/10.1007/s10344-008-0183-x>
- Schumaker, N.H. (2015). *HexSim (version 4.0.20)*. Retrieved Jul 24, 2023 from [www.hexsim.net](http://www.hexsim.net).
- Schumaker, N.H., and Brookes, A. (2018). HexSim: a modeling environment for ecology and conservation. *Landscape Ecology*, 33, 197-211. <https://doi.org/10.1007/s10980-017-0605-9>
- Schumaker, N.H., Brookes, A., Dunk, J.R., Woodbridge, B., Heinrichs, J.A., Lawler, J.J., et al. (2014). Mapping sources, sinks, and connectivity using a simulation model of northern spotted owls. *Landscape Ecology*, 29, 579-592. <https://doi.org/10.1007/s10980-014-0004-4>
- Seo, C.W., and Park, C.H. (2000). Wild boar (*Sus scrofa corranus* Heude) habitat modeling using GIS and logistic regression. *Journal of GIS Association of Korea*, 8, 85-99.
- Singer, F.J., Otto, D.K., Tipton, A.R., and Hable, C.P. (1981). Home ranges, movements, and habitat use of European wild boar in Tennessee. *Journal of Wildlife Management*, 45, 343-353. <https://doi.org/10.2307/3807917>
- Sjarmidi, A., Spitz, F., and Valet, G. (1992). Food resource used by wild boar in southern France. In F. Spitz, G. Janeau, G. Gonzalez, and S. Aulagnier (Eds.), *Ongulés/Ungulates 91. Proceedings of the International Symposium* (pp. 171-173). Société Française pour l'Etude et la Protection des Mammifères.
- Snow, N.P., Jarzyna, M.A., and VerCauteren, K.C. (2017). Interpreting and predicting the spread of invasive wild pigs. *Journal of Applied Ecology*, 54, 2022-2032. <https://doi.org/10.1111/1365-2664.12866>
- Spencer, W., Rustigian-Romsos, H., Strittholt, J., Scheller, R., Zielinski, W., and Truex, R. (2011). Using occupancy and population models to assess habitat conservation opportunities for an isolated carnivore population. *Biological Conservation*, 144, 788-803. <https://doi.org/10.1016/j.biocon.2010.10.027>
- Squires, J.R., DeCesare, N.J., Olson, L.E., Kolbe, J.A., Hebblewhite, M., and Parks, S.A. (2013). Combining resource selection and movement behavior to predict corridors for Canada lynx at their southern range periphery. *Biological Conservation*, 157, 187-195. <https://doi.org/10.1016/j.biocon.2012.07.018>
- Stockwell, D., and Peters, D. (1999). The GARP modelling system: problems and solutions to automated spatial prediction. *International Journal of Geographical Information Science*, 13, 143-158. <https://doi.org/10.1080/136588199241391>
- Ward, G., Hastie, T., Barry, S., Elith, J., and Leathwick, J.R. (2009). Presence-only data and the EM algorithm. *Biometrics*, 65, 554-563. <https://doi.org/10.1111/j.1541-0420.2008.01116.x>
- Yackulic, C.B., Chandler, R., Zipkin, E.F., Royle, J.A., Nichols, J.D., Campbell Grant, E.H., et al. (2013). Presence-only modelling using MAXENT: when can we trust the inferences? *Methods in Ecology and Evolution*, 4, 236-243. <https://doi.org/10.1111/2041-210x.12004>